

Den 14. juni 2016



Henning Smiths Vej / Poul Buås Vej

Himmerland afd. 03



HIMMERLAND
BOLIGFORENING

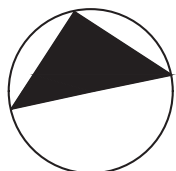
INDEX

Henning Smits vej / Poul Buås vej – Rækkefølgeplan.....	04
Henning Smits vej / Poul Buås vej – Tidsplan	05
Henning Smits vej / Poul Buås vej – Huslejer.....	06
Henning Smits vej / Poul Buås vej – Adresser og lejligheder.....	07 - 09
Lejlighed type 2V1.....	10
Lejlighed type 2V2.....	11
Lejlighed type 2V3.....	12
Lejlighed type 2V4.....	13
Lejlighed type 2V5.....	14
Lejlighed type 2V6.....	15
Lejlighed type 2V7.....	16
Lejlighed type 2VT1.....	17
Lejlighed type 2VT2.....	18
Lejlighed type 2VT3.....	19
Lejlighed type 2VT5.....	20
Lejlighed type 2VT5.....	21
Lejlighed type 2VT6.....	22
Lejlighed type 3V1.....	23
Lejlighed type 3V2.....	24
Lejlighed type 3V3.....	25
Lejlighed type 3V4.....	26
Lejlighed type 3VT1.....	27
Lejlighed type 3VT2.....	28
Lejlighed type 3VT3.....	29
Lejlighed type 3V2E1.....	30
Lejlighed type 3V2E2.....	31
Lejlighed type 3V2E3.....	32
Lejlighed type 3V2E4.....	33
Lejlighed type 3V2E5.....	34
Lejlighed type 3V2E6.....	35
Lejlighed type 3V2E7.....	36
Lejlighed type 3V2E8.....	37
Lejlighed type 3V2E9.....	38
Lejlighed type 3V2E10.....	39
Lejlighed type 3V2E11.....	40
Lejlighed type 4V2E1.....	41
Lejlighed type 4V2E2.....	42
Lejlighed type 4V2E3.....	43
Lejlighed type 4V2E4.....	44
Lejlighed type 5V2E1.....	45
Lejlighed type 5V2E2.....	46

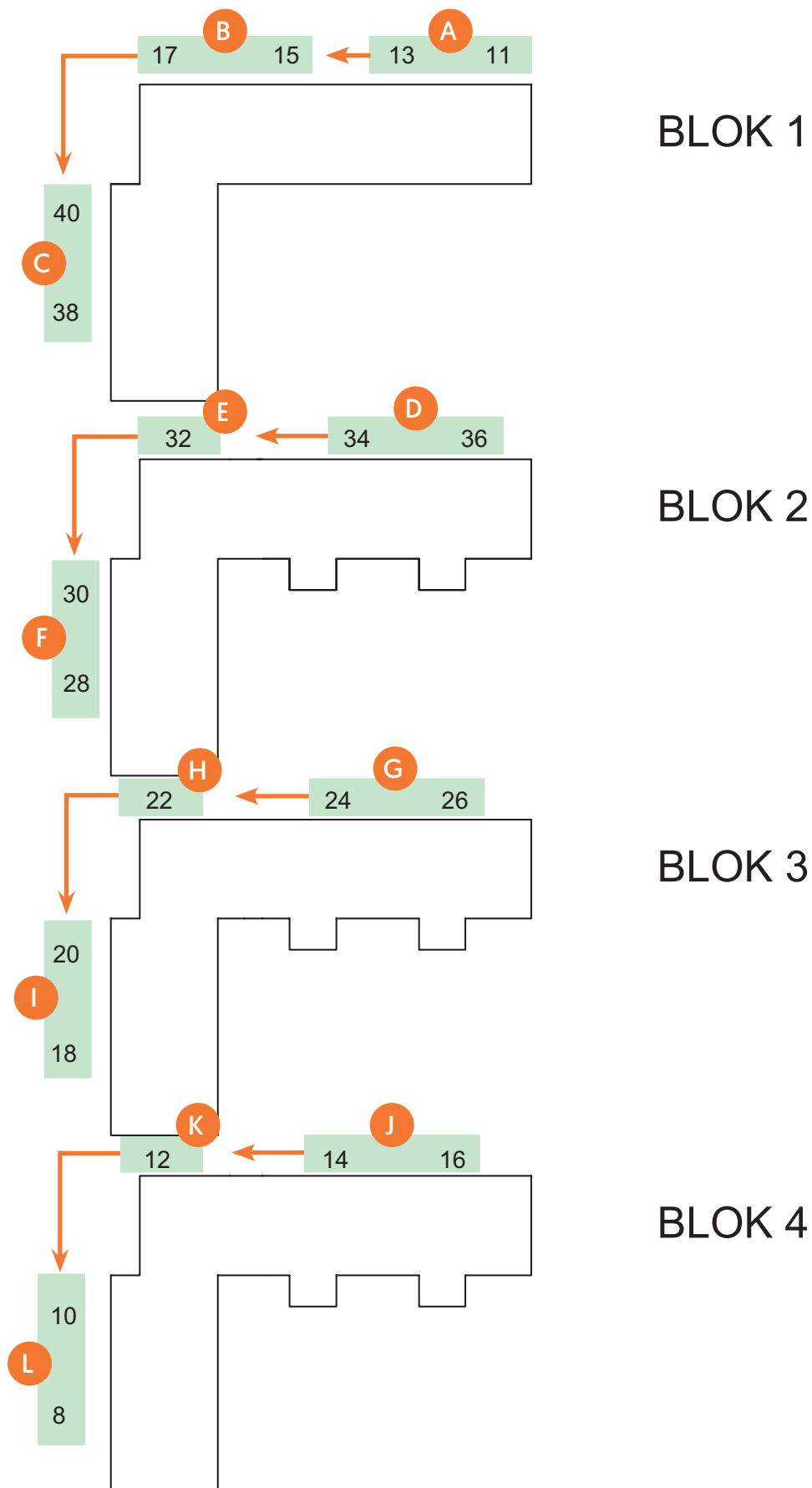
Rækkefølgeplan

Der tages forbehold for ændringer

Poul Buås Vej



Henning Smiths Vej



Tidsplan

Afdeling 03 - Henning Smiths Vej / Poul Buås Vej

Der tages forbehold for ændringer i tidsplanen

Blokke	Etaper	Hus nr.	Ud	Forventet retur
Blok 1	A	11 - 13	01.02.2017	01.06.2017
	B	15 - 17	01.04.2017	01.09.2017
	C	40 - 38	01.06.2017	01.12.2017
Blok 2	D	36 - 34	01.09.2017	01.02.2018
	E	32	01.11.2017	01.04.2018
	F	30 - 28	01.12.2017	01.05.2018
Blok 3	G	26 - 24	01.02.2018	01.07.2018
	H	22	01.04.2018	01.10.2018
	I	20 - 18	01.05.2018	01.11.2018
Blok 4	J	16 - 14	01.07.2018	01.01.2019
	K	12	01.10.2018	01.02.2019
	L	10 - 8	01.11.2018	01.04.2019

Huslejer

Afdeling 03 - Henning Smiths Vej / Poul Buås Vej

Oversigt over fremtidig husleje efter renovering

Lejen er incl. B-ordning men excl. aconto forbrug (vand, el, varme)

Beregningen er foreløbig. Der tages forbehold overfor ændringer.

Rum:	Type:	Areal/m2	Leje 2017 kr. pr. måned	Leje 2018 kr. pr. måned	Leje 2019 kr. pr. måned	A Conto Varme	A Conto Vand
2	2 V 1	62,00	4.266	4.372	4.481	360	260
2	2 V 2	70,00	4.658	4.774	4.894	360	260
2	2 V 3	64,00	4.188	4.293	4.401	360	260
2	2 V 4	56,00	3.796	3.891	3.988	360	260
2	2 V 5	58,00	3.894	3.992	4.091	360	260
2	2 V 6	59,00	3.943	4.042	4.143	360	260
2	2 V 7	57,00	4.020	4.121	4.224	360	260
2	2 V T 1	88,00	5.715	5.858	6.005	400	280
2	2 V T 2	72,00	4.931	5.054	5.181	360	260
2	2 V T 3	73,00	4.980	5.104	5.232	360	260
2	2 V T 4	72,00	4.931	5.054	5.181	360	260
2	2 V T 5	66,00	4.637	4.753	4.871	360	260
2	2 V T 6	66,00	4.637	4.753	4.871	360	260
3	3 V 1	118,00	7.011	7.186	7.366	540	330
3	3 V 2	108,00	6.521	6.684	6.851	490	310
3	3 V 3	79,00	5.099	5.227	5.357	360	260
3	3 V 4	72,00	4.581	4.695	4.813	360	260
3	3 V T 1	82,00	5.421	5.557	5.696	400	280
3	3 V T 2	73,00	4.980	5.104	5.232	360	260
3	3 V T 3	107,00	7.698	7.890	8.087	490	310
3	3 V 2E 1	110,00	6.794	6.964	7.138	490	310
3	3 V 2E 2	93,00	5.785	5.930	6.078	450	300
3	3 V 2E 3	96,00	5.933	6.081	6.233	450	300
3	3 V 2E 4	103,00	6.276	6.433	6.593	490	310
3	3 V 2E 5	97,00	5.982	6.131	6.284	450	300
3	3 V 2E 6	94,00	5.659	5.801	5.946	450	300
3	3 V 2E 7	103,00	6.101	6.253	6.409	490	310
3	3 V 2E 8	98,00	5.855	6.002	6.152	450	300
3	3 V 2E 9	104,00	6.150	6.303	6.461	490	310
3	3 V 2E 10	113,00	6.591	6.756	6.925	540	330
3	3 V 2E 11	96,00	5.933	6.081	6.233	450	300
4	4 V 2E 1	134,00	7.971	8.170	8.374	540	330
4	4 V 2E 2	101,00	6.178	6.332	6.490	490	310
4	4 V 2E 3	126,00	7.403	7.588	7.778	540	330
4	4 V 2E 4	103,00	6.276	6.433	6.593	490	310
5	5 V 2E 1	126,00	7.403	7.588	7.778	540	330
5	5 V 2E 2	126,00	7.228	7.409	7.594	540	330

Signaturforklaring:

V = Værelser
T = Tilgængelighed
2E = 2 Etager

Eksempel 1:

3V2E7
3--- Antal
-V-- Værelser
--2E 2 Etager
---7 Løbe nr. 7

Eksempel 2:

3VT2
3--- Antal
-V-- Værelser
--T Tilgængelighed
---2 Løbe nr. 2

Adresser – lejligheder

Der tages forbehold for ændringer

A

Adresse	Type	Rum	Etapé	Nyt BBR areal
Poul Buås Vej 13, st.tv.	2V4	2	A	56
Poul Buås Vej 13, st.th.	2V5	2	A	58
Poul Buås Vej 13, 1.tv.	2V4	2	A	56
Poul Buås Vej 13, 1.th.	2V5	2	A	58
Poul Buås Vej 13, 2.tv.	2V4	2	A	56
Poul Buås Vej 13, 2.th.	2V5	2	A	58
Poul Buås Vej 13, 3.tv.	2V4	2	A	56
Poul Buås Vej 13, 3.th.	2V5	2	A	58
Poul Buås Vej 13, 4.tv.	3V2E8	3	A	98
Poul Buås Vej 13, 4.th.	3V2E9	3	A	104
Poul Buås Vej 11, st.tv.	2V6	2	A	59
Poul Buås Vej 11, st.th.	2V5	2	A	58
Poul Buås Vej 11, 1.tv.	2V6	2	A	59
Poul Buås Vej 11, 1.th.	2V5	2	A	58
Poul Buås Vej 11, 2.tv.	2V6	2	A	59
Poul Buås Vej 11, 2.th.	2V5	2	A	58
Poul Buås Vej 11, 3.tv.	2V6	2	A	59
Poul Buås Vej 11, 3.th.	2V5	2	A	58
Poul Buås Vej 11, 4.tv.	3V2E6	3	A	94
Poul Buås Vej 11, 4.th.	3V2E7	3	A	103

B

Adresse	Type	Rum	Etapé	Nyt BBR areal
Poul Buås Vej 17, st.tv.	2V4	2	B	56
Poul Buås Vej 17, st.th.	2V3	2	B	64
Poul Buås Vej 17, 1.tv.	2V4	2	B	56
Poul Buås Vej 17, 1.th.	2V3	2	B	64
Poul Buås Vej 17, 2.tv.	2V4	2	B	56
Poul Buås Vej 17, 2.th.	2V3	2	B	64
Poul Buås Vej 17, 3.tv.	2V4	2	B	56
Poul Buås Vej 17, 3. th.	2V3	2	B	64
Poul Buås Vej 17, 4.tv.	3V2E8	3	B	98
Poul Buås Vej 17, 4.th.	3V2E10	3	B	113
Poul Buås Vej 15, st.tv.	2V4	2	B	56
Poul Buås Vej 15, st.th.	3V4	3	B	72
Poul Buås Vej 15, 1.tv.	2V4	2	B	56
Poul Buås Vej 15, 1.th.	3V4	3	B	72
Poul Buås Vej 15, 2.tv.	2V4	2	B	56
Poul Buås Vej 15, 2.th.	3V4	3	B	72
Poul Buås Vej 15, 3.tv.	2V4	2	B	56
Poul Buås Vej 15, 3.th.	3V4	3	B	72
Poul Buås Vej 15, 4.tv.	3V2E8	3	B	98
Poul Buås Vej 15, 4.th.	5V2E2	5	B	126

C

Adresse	Type	Rum	Etapé	Nyt BBR areal
Henning Smiths Vej 38, st.tv.	2V1	2	C	62
Henning Smiths Vej 38, st.th.	2V7	2	C	57
Henning Smiths Vej 38, 1.tv.	2V1	2	C	62
Henning Smiths Vej 38, 1.th.	2V7	2	C	57
Henning Smiths Vej 38, 2.tv.	2V1	2	C	62
Henning Smiths Vej 38, 2.th.	2V7	2	C	57
Henning Smiths Vej 38, 3.tv.	2V1	2	C	62
Henning Smiths Vej 38, 3.th.	2V7	2	C	57
Henning Smiths Vej 38, 4.tv.	3V2E4	3	C	103
Henning Smiths Vej 38, 4.th.	3V2E5	3	C	97
Henning Smiths Vej 40, st.tv.	2V1	2	C	62
Henning Smiths Vej 40, st.th.	2V7	2	C	57
Henning Smiths Vej 40, 1.tv.	2V1	2	C	62
Henning Smiths Vej 40, 1.th.	2V7	2	C	57
Henning Smiths Vej 40, 2.tv.	2V1	2	C	62
Henning Smiths Vej 40, 2.th.	2V7	2	C	57
Henning Smiths Vej 40, 3.tv.	2V1	2	C	62
Henning Smiths Vej 40, 3.th.	2V7	2	C	57
Henning Smiths Vej 40, 4.tv.	3V2E2	3	C	93
Henning Smiths Vej 40, 4.th.	4V2E4	4	C	103

D

Adresse	Type	Rum	Etapé	Nyt BBR areal
Henning Smiths Vej 34, st.tv.	2VT6	2	D	66
Henning Smiths Vej 34, st.th.	3VT1	3	D	82
Henning Smiths Vej 34, 1.tv.	2VT6	2	D	66
Henning Smiths Vej 34, 1.th.	3VT2	3	D	73
Henning Smiths Vej 34, 2.tv.	2VT6	2	D	66
Henning Smiths Vej 34, 2.th.	3VT1	3	D	82
Henning Smiths Vej 34, 3.tv.	2VT2	2	D	72
Henning Smiths Vej 34, 3.th.	3VT2	3	D	73
Henning Smiths Vej 34, 4.tv.	3V2E1	3	D	110
Henning Smiths Vej 34, 4.th.	4V2E1	4	D	134
Henning Smiths Vej 36, st.tv.	2VT6	2	D	66
Henning Smiths Vej 36, st.th.	3VT1	3	D	82
Henning Smiths Vej 36, 1.tv.	2VT4	2	D	72
Henning Smiths Vej 36, 1.th.	2VT3	2	D	73
Henning Smiths Vej 36, 2.tv.	2VT4	2	D	72
Henning Smiths Vej 36, 2.th.	2VT3	2	D	73
Henning Smiths Vej 36, 3.tv.	2VT6	2	D	66
Henning Smiths Vej 36, 3.th.	3VT2	3	D	73
Henning Smiths Vej 36, 4.tv.	3V2E1	3	D	110
Henning Smiths Vej 36, 4.th.	4V2E1	4	D	134

Adresser – lejligheder

Der tages forbehold for ændringer

Adresse	Type	Rum	Etapé	Nyt BBR areal
Henning Smiths Vej 32, st.tv.	Udgår			
Henning Smiths Vej 32, st.th.	2VT1	2	E	88
Henning Smiths Vej 32, 1.tv.	2VT6	2	E	66
Henning Smiths Vej 32, 1.th.	2VT5	2	E	66
Henning Smiths Vej 32, 2.tv.	2VT6	2	E	66
Henning Smiths Vej 32, 2.th.	2VT5	2	E	66
Henning Smiths Vej 32, 3.tv.	2VT6	2	E	66
Henning Smiths Vej 32, 3.th.	2VT5	2	E	66
Henning Smiths Vej 32, 4.tv.	3V2E1	3	E	110
Henning Smiths Vej 32, 4.th.	3VT3	3	E	107

Adresse	Type	Rum	Etapé	Nyt BBR areal
Henning Smiths Vej 28, st.tv.	3V1	3	F	118
Henning Smiths Vej 28, st.th.	2V2	2	F	70
Henning Smiths Vej 28, 1.tv.	3V1	3	F	118
Henning Smiths Vej 28, 1.th.	2V2	2	F	70
Henning Smiths Vej 28, 2.tv.	3V1	3	F	118
Henning Smiths Vej 28, 2.th.	2V2	2	F	70
Henning Smiths Vej 28, 3.tv.	3V1	3	F	118
Henning Smiths Vej 28, 3.th.	2V2	2	F	70
Henning Smiths Vej 28, 4.tv.	5V2E1	5	F	126
Henning Smiths Vej 28, 4.th.	3V2E3	3	F	96
Henning Smiths Vej 30, st.tv.	2V1	2	F	62
Henning Smiths Vej 30, st.th.	Udgår			
Henning Smiths Vej 30, 1.tv.	2V1	2	F	62
Henning Smiths Vej 30, 1.th.	Udgår			
Henning Smiths Vej 30, 2.tv.	2V1	2	F	62
Henning Smiths Vej 30, 2.th.	Udgår			
Henning Smiths Vej 30, 3.tv.	2V1	2	F	62
Henning Smiths Vej 30, 3.th.	Udgår			
Henning Smiths Vej 30, 4.tv.	3V2E2	3	F	93
Henning Smiths Vej 30, 4.th.	4V2E2	4	F	101

Adresse	Type	Rum	Etapé	Nyt BBR areal
Henning Smiths Vej 24, st.tv.	2VT6	2	G	66
Henning Smiths Vej 24, st.th.	3VT1	3	G	82
Henning Smiths Vej 24, 1.tv.	2VT6	2	G	66
Henning Smiths Vej 24, 1.th.	3VT2	3	G	73
Henning Smiths Vej 24, 2.tv.	2VT6	2	G	66
Henning Smiths Vej 24, 2.th.	3VT1	3	G	82
Henning Smiths Vej 24, 3.tv.	2VT2	2	G	72
Henning Smiths Vej 24, 3.th.	3VT2	3	G	73
Henning Smiths Vej 24, 4.tv.	3V2E1	3	G	110
Henning Smiths Vej 24, 4.th.	4V2E1	4	G	134
Henning Smiths Vej 26, st.tv.	2VT6	2	G	66
Henning Smiths Vej 26, st.th.	3VT1	3	G	82
Henning Smiths Vej 26, 1.tv.	2VT4	2	G	72
Henning Smiths Vej 26, 1.th.	2VT3	2	G	73
Henning Smiths Vej 26, 2.tv.	2VT4	2	G	72
Henning Smiths Vej 26, 2.th.	2VT3	2	G	73
Henning Smiths Vej 26, 3.tv.	2VT6	2	G	66
Henning Smiths Vej 26, 3.th.	3VT2	3	G	73
Henning Smiths Vej 26, 4.tv.	3V2E1	3	G	110
Henning Smiths Vej 26, 4.th.	4V2E1	4	G	134

Adresse	Type	Rum	Etapé	Nyt BBR areal
Henning Smiths Vej 22, st.tv.	Udgår			
Henning Smiths Vej 22, st.th.	2VT1	2	H	88
Henning Smiths Vej 22, 1.tv.	2VT6	2	H	66
Henning Smiths Vej 22, 1.th.	2VT5	2	H	66
Henning Smiths Vej 22, 2.tv.	2VT6	2	H	66
Henning Smiths Vej 22, 2.th.	2VT5	2	H	66
Henning Smiths Vej 22, 3.tv.	2VT6	2	H	66
Henning Smiths Vej 22, 3.th.	2VT5	2	H	66
Henning Smiths Vej 22, 4.tv.	3V2E1	3	H	110
Henning Smiths Vej 22, 4.th.	3VT3	3	H	107

Adresser – lejligheder

Der tages forbehold for ændringer

Adresse	Type	Rum	Etapé	Nyt BBR areal
Henning Smiths Vej 18, st.tv.	3V1	3	I	118
Henning Smiths Vej 18, st.th.	2V2	2	I	70
Henning Smiths Vej 18, 1.tv.	3V1	3	I	118
Henning Smiths Vej 18, 1.th.	2V2	2	I	70
Henning Smiths Vej 18, 2.tv.	3V1	3	I	118
Henning Smiths Vej 18, 2.th.	2V2	2	I	70
Henning Smiths Vej 18, 3.tv.	3V1	3	I	118
Henning Smiths Vej 18, 3.th.	2V2	2	I	70
Henning Smiths Vej 18, 4.tv.	5V2E1	5	I	126
Henning Smiths Vej 18, 4.th.	3V2E3	3	I	96
Henning Smiths Vej 20, st.tv.	2V1	2	I	62
Henning Smiths Vej 20, st.th.	Udgår			
Henning Smiths Vej 20, 1.tv.	2V1	2	I	62
Henning Smiths Vej 20, 1.th.	Udgår			
Henning Smiths Vej 20, 2.tv.	2V1	2	I	62
Henning Smiths Vej 20, 2.th.	Udgår			
Henning Smiths Vej 20, 3.tv.	2V1	2	I	62
Henning Smiths Vej 20, 3.th.	Udgår			
Henning Smiths Vej 20, 4.tv.	3V2E2	3	I	93
Henning Smiths Vej 20, 4.th.	4V2E2	4	I	101

Adresse	Type	Rum	Etapé	Nyt BBR areal
Henning Smiths Vej 14, st.tv.	2VT6	2	J	66
Henning Smiths Vej 14, st.th.	3VT1	3	J	82
Henning Smiths Vej 14, 1.tv.	2VT6	2	J	66
Henning Smiths Vej 14, 1.th.	3VT2	3	J	73
Henning Smiths Vej 14, 2.tv.	2VT6	2	J	66
Henning Smiths Vej 14, 2.th.	3VT1	3	J	82
Henning Smiths Vej 14, 3.tv.	2VT2	2	J	72
Henning Smiths Vej 14, 3.th.	3VT2	3	J	73
Henning Smiths Vej 14, 4.tv.	3V2E1	3	J	110
Henning Smiths Vej 14, 4.th.	4V2E1	4	J	134
Henning Smiths Vej 16, st.tv.	2VT6	2	J	66
Henning Smiths Vej 16, st.th.	3VT1	3	J	82
Henning Smiths Vej 16, 1.tv.	2VT4	2	J	72
Henning Smiths Vej 16, 1.th.	2VT3	2	J	73
Henning Smiths Vej 16, 2.tv.	2VT4	2	J	72
Henning Smiths Vej 16, 2.th.	2VT3	2	J	73
Henning Smiths Vej 16, 3.tv.	2VT6	2	J	66
Henning Smiths Vej 16, 3.th.	3VT2	3	J	73
Henning Smiths Vej 16, 4.tv.	3V2E1	3	J	110
Henning Smiths Vej 16, 4.th.	4V2E1	4	J	134

Adresse	Type	Rum	Etapé	Nyt BBR areal
Henning Smiths Vej 12, st.tv.	Udgår			
Henning Smiths Vej 12, st.th.	2VT1	2	K	88
Henning Smiths Vej 12, 1.tv.	2VT6	2	K	66
Henning Smiths Vej 12, 1.th.	2VT5	2	K	66
Henning Smiths Vej 12, 2.tv.	2VT6	2	K	66
Henning Smiths Vej 12, 2.th.	2VT5	2	K	66
Henning Smiths Vej 12, 3.tv.	2VT6	2	K	66
Henning Smiths Vej 12, 3.th.	2VT5	2	K	66
Henning Smiths Vej 12, 4.tv.	3V2E1	3	K	110
Henning Smiths Vej 12, 4.th.	3VT3	3	K	107

Adresse	Type	Rum	Etapé	Nyt BBR areal
Henning Smiths Vej 8, st.tv.	3V2	3	L	108
Henning Smiths Vej 8, st.th.	3V3	3	L	79
Henning Smiths Vej 8, 1.tv.	3V2	3	L	108
Henning Smiths Vej 8, 1.th.	3V3	3	L	79
Henning Smiths Vej 8, 2.tv.	3V2	3	L	108
Henning Smiths Vej 8, 2.th.	3V3	3	L	79
Henning Smiths Vej 8, 3.tv.	3V2	3	L	108
Henning Smiths Vej 8, 3.th.	3V3	3	L	79
Henning Smiths Vej 8, 4.tv.	3V2E1	3	L	96
Henning Smiths Vej 8, 4.th.	4V2E3	4	L	126
Henning Smiths Vej 10, st.tv.	2V1	2	L	62
Henning Smiths Vej 10, st.th.	Udgår			
Henning Smiths Vej 10, 1.tv.	2V1	2	L	62
Henning Smiths Vej 10, 1.th.	Udgår			
Henning Smiths Vej 10, 2.tv.	2V1	2	L	62
Henning Smiths Vej 10, 2.th.	Udgår			
Henning Smiths Vej 10, 3.tv.	2V1	2	L	62
Henning Smiths Vej 10, 3.th.	Udgår			
Henning Smiths Vej 10, 4.tv.	3V2E2	3	L	93
Henning Smiths Vej 10, 4.th.	4V2E2	4	L	101

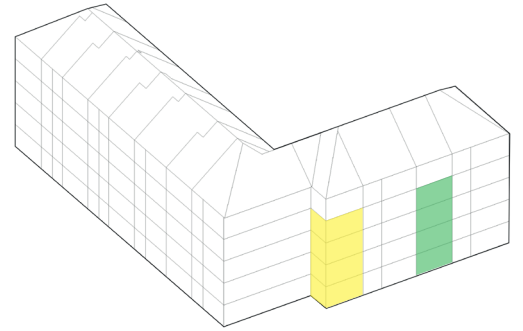
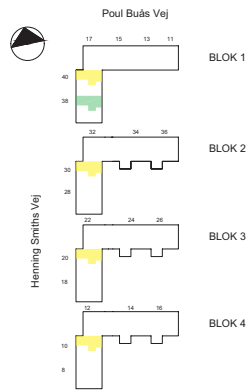
Lejlighed 2v.1

2 værelser
62 m²

Blok:
1, 2, 3 og 4

Ialt 20 stk.

Minielevator
Altan mod vest
eller terrasse mod øst



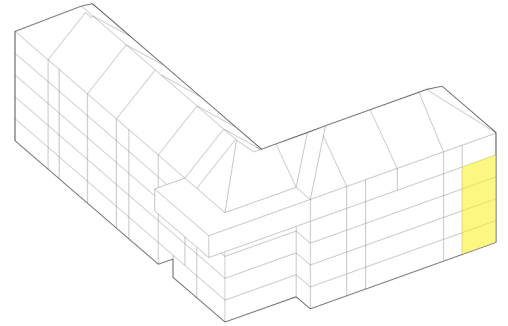
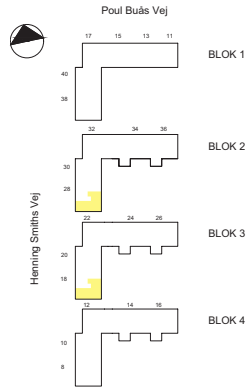
Lejlighed 2v.2

2 værelser
70 m²

Blok:
2 og 3

Ialt 8 stk.

Minielevator
Altan mod vest
eller terrasse mod øst



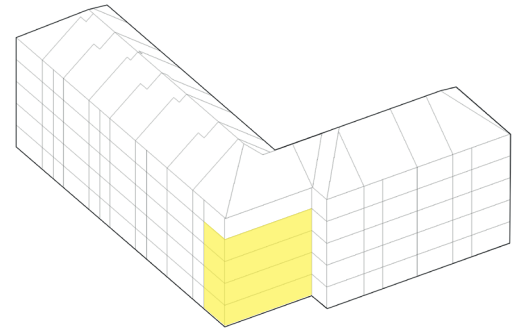
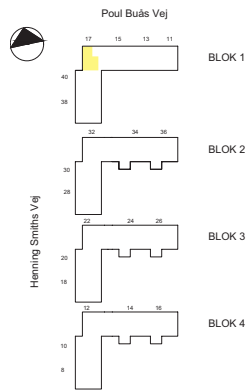
Lejlighed 2v.3

2 værelser
64 m²

Blok:
1

Ialt 4 stk.

Ingen elevator
Altan eller fransk altan mod vest



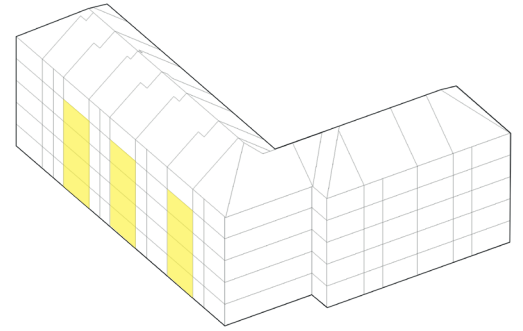
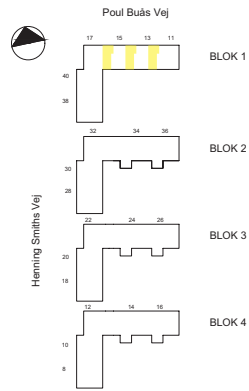
Lejlighed 2v.4

2 værelser
56 m²

Blok:
1

Ialt 12 stk.

Altan eller terrasse mod syd



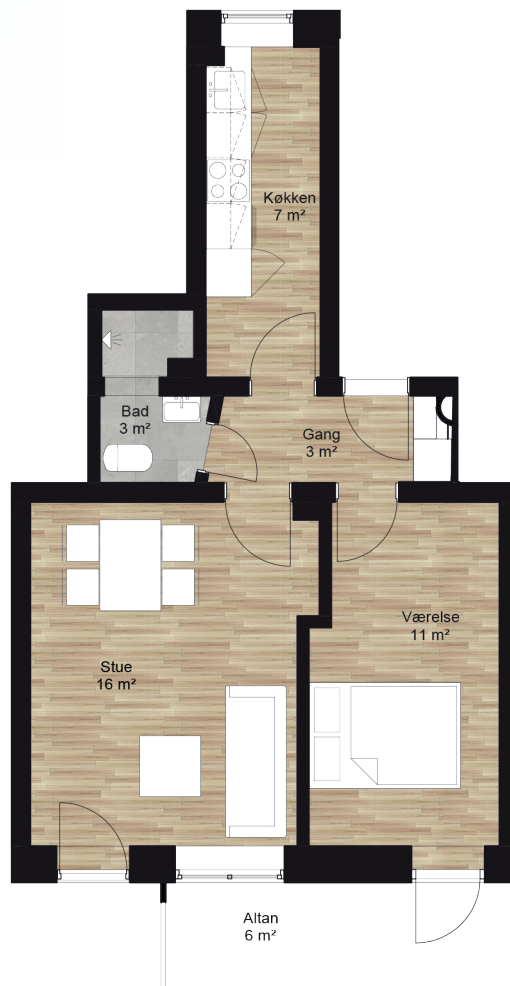
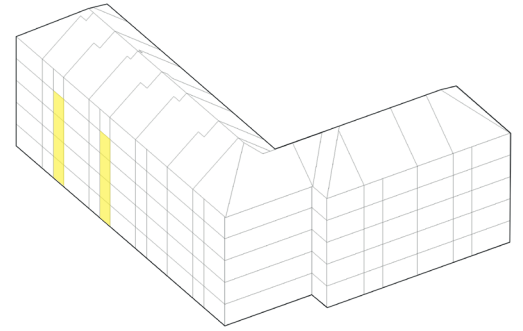
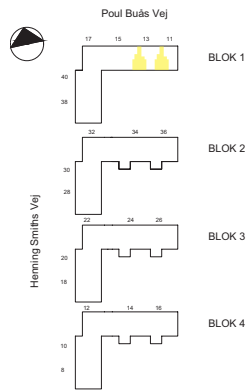
Lejlighed 2v.5

2 værelser
58 m²

Blok:
1

Ialt 8 stk.

Ingen elevator
Altan eller terrasse mod syd



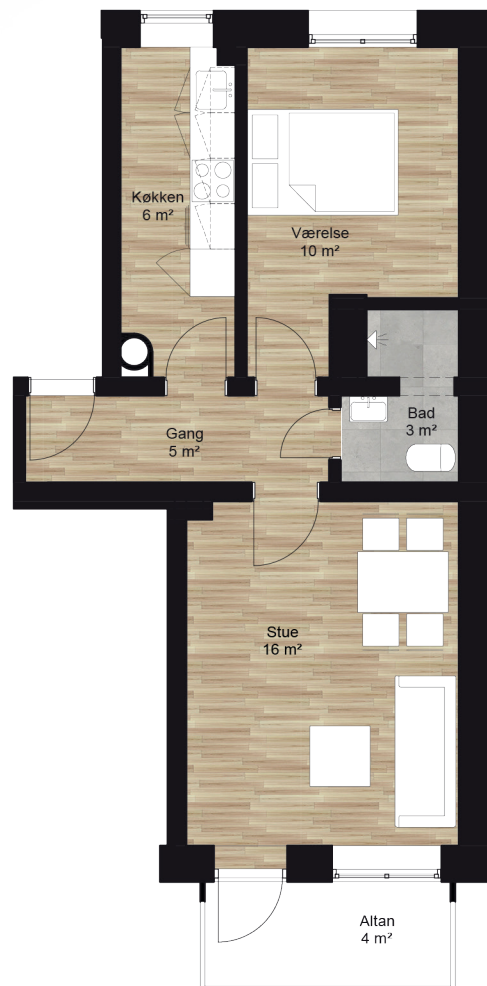
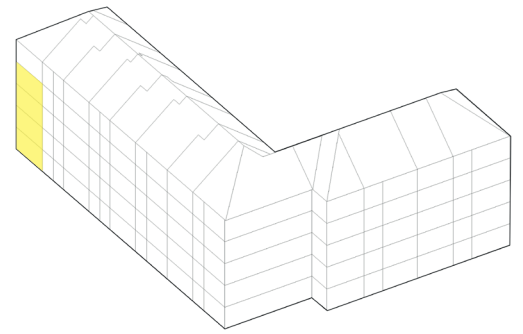
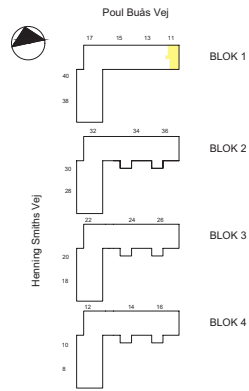
Lejlighed 2v.6

2 værelser
59 m²

Blok:
1

Ialt 4 stk.

Ingen elevator
Altan eller terrasse mod syd



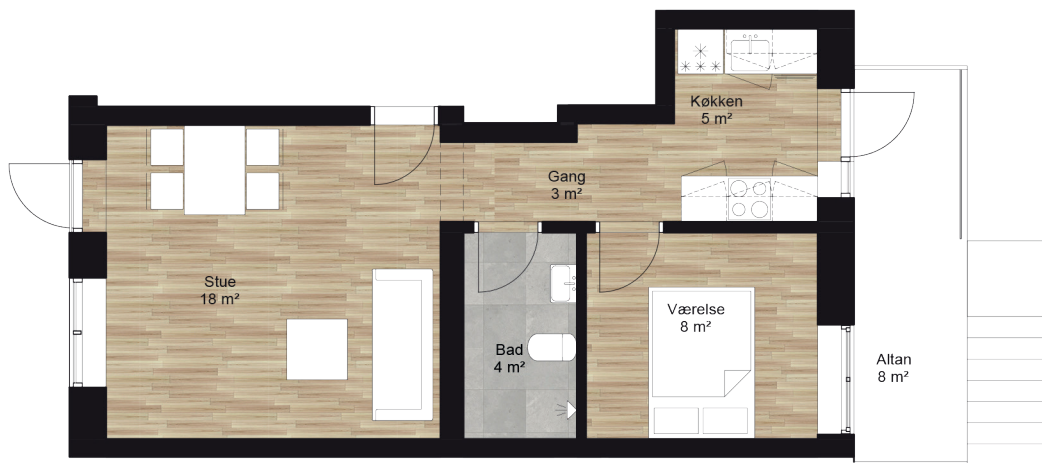
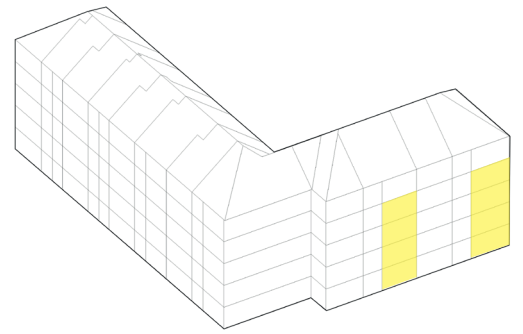
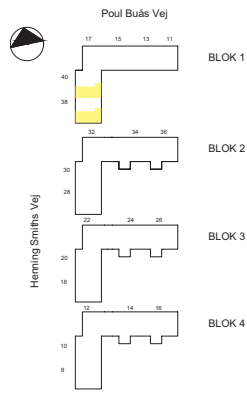
Lejlighed 2v.7

2 værelser
57 m²

Blok:
1

Ialt 8 stk.

Minielevator
Altan mod vest
eller terrasse mod øst



Lejlighed 2vT.1

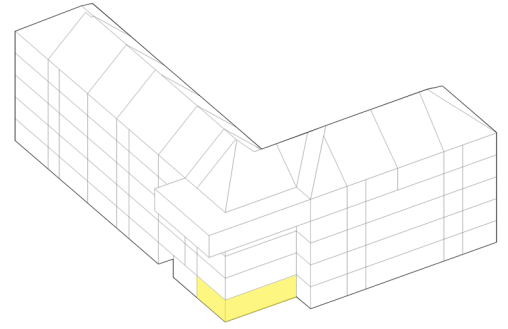
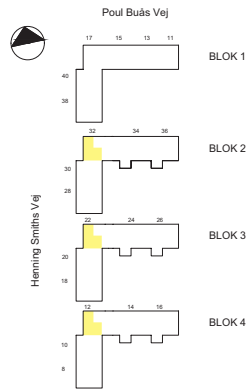
2 værelser
88 m²

Blok:
2, 3 og 4

Ialt 3 stk.

Elevator
Fransk altan mod vest
og terrasse mod syd

Tilgængelighedsbolig



Lejlighed 2vT.2

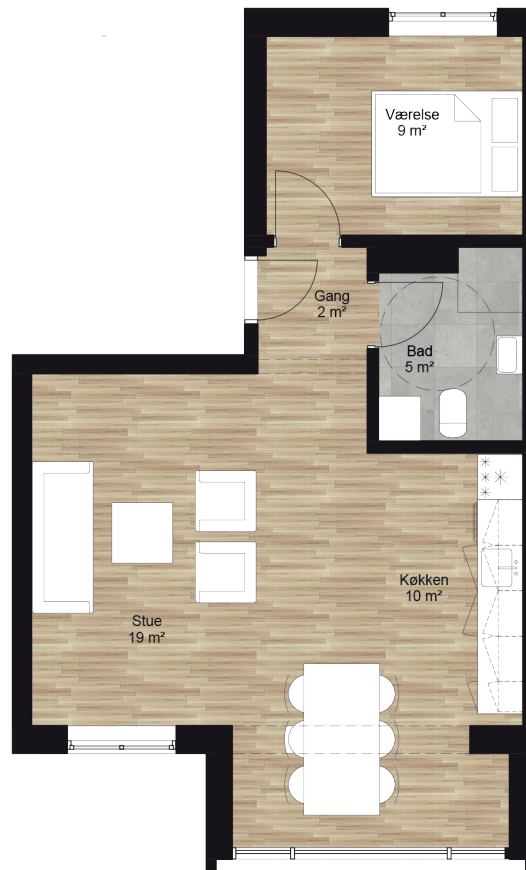
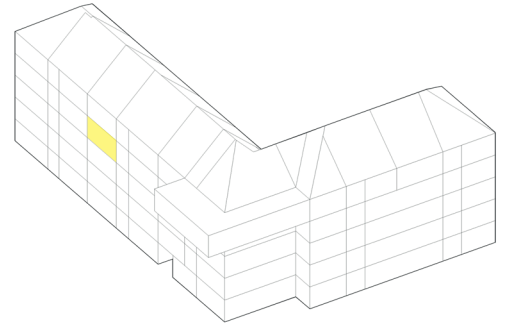
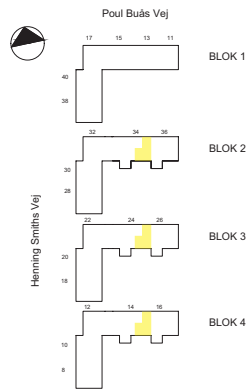
2 værelser
72 m²

Blok:
2, 3 og 4

Ialt 3 stk.

Elevator
Altan mod syd

Tilgængelighedsbolig



Lejlighed 2vT.3

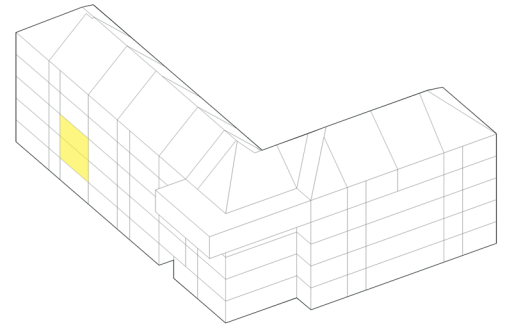
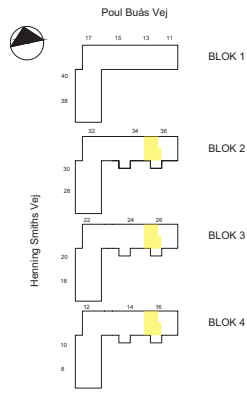
2 værelser
73 m²

Blok:
2, 3 og 4

Ialt 6 stk.

Elevator
Altan mod syd

Tilgængelighedsbolig



Lejlighed 2vT.4

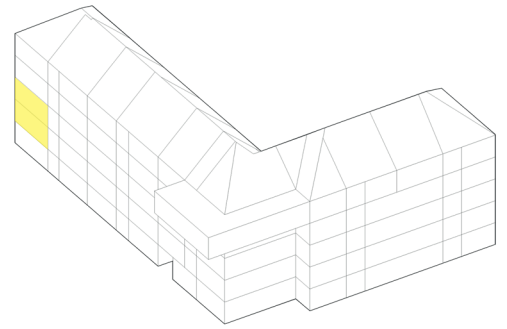
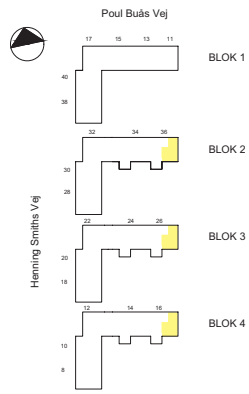
2 værelser
72 m²

Blok:
2, 3 og 4

Ialt 6 stk.

Elevator
Altan mod syd

Tilgængelighedsbolig



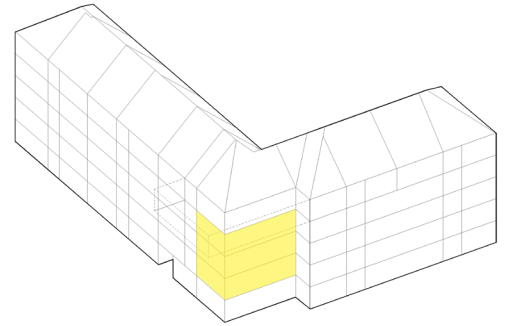
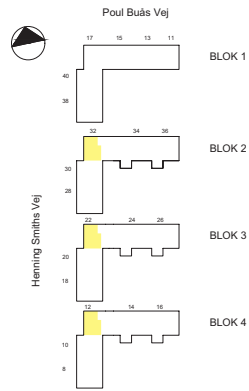
Lejlighed 2vT.5

2 værelser
66 m²

Blok:
2, 3 og 4
Ialt 9 stk.

Elevator
Altan mod vest

Tilgængelighedsbolig



Lejlighed 2vT.6

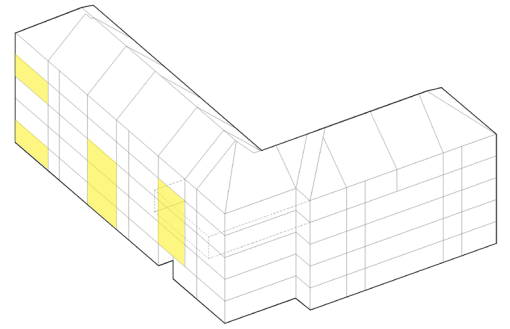
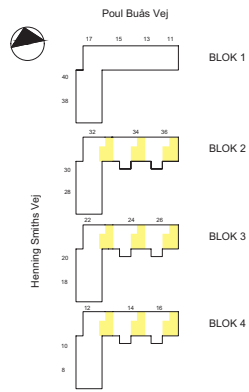
2 værelser
66 m²

Blok:
2, 3 og 4

Ialt 24 stk.

Elevator
Altan eller terrasse mod syd

Tilgængelighedsbolig



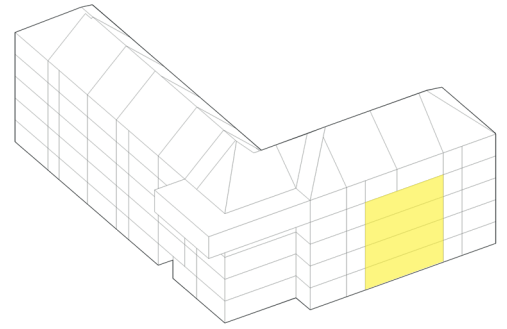
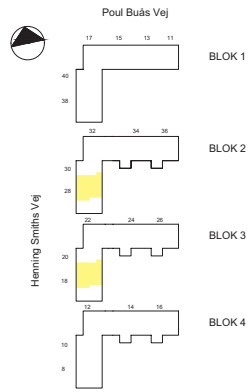
Lejlighed 3v.1

3 værelser
118 m²

Blok:
2 og 3

Ialt 8 stk.

Minielevator
Altan mod vest
eller terrasse mod øst



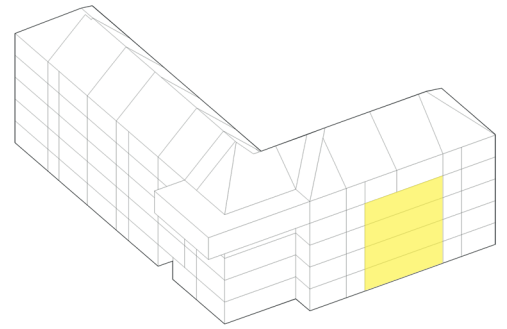
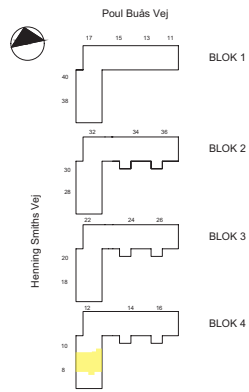
Lejlighed 3v.2

3 værelser
108 m²

Blok:
4

Ialt 4 stk.

Minielevator
Altan mod vest
eller terrasse mod øst



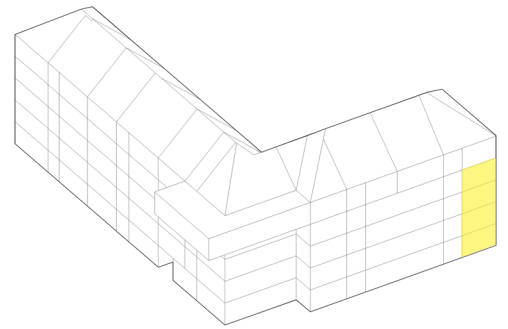
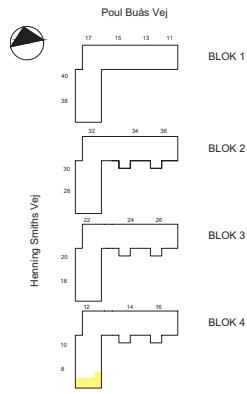
Lejlighed 3v.3

3 værelser
79 m²

Blok:
4

Ialt 4 stk.

Minielevator
Altan mod vest, syd
eller terrasse mod øst



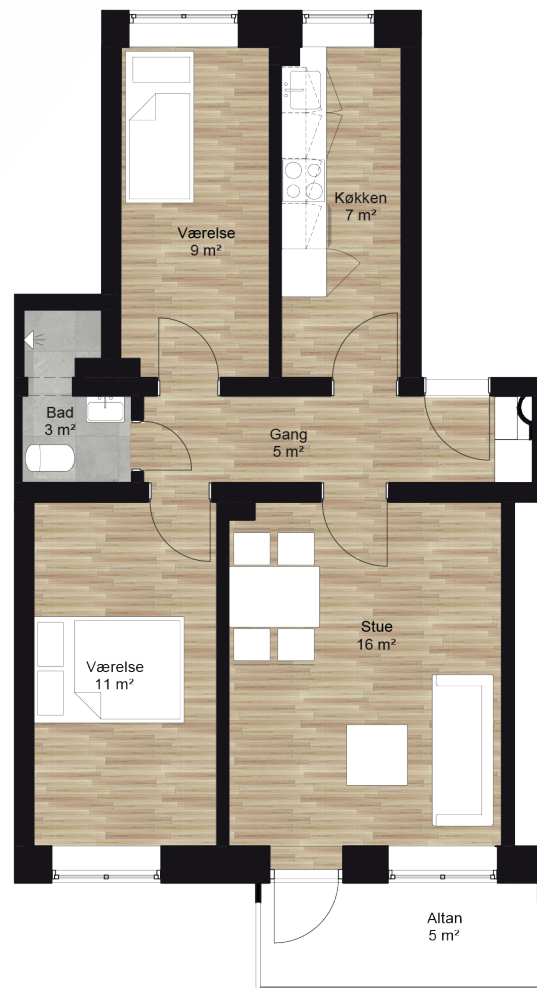
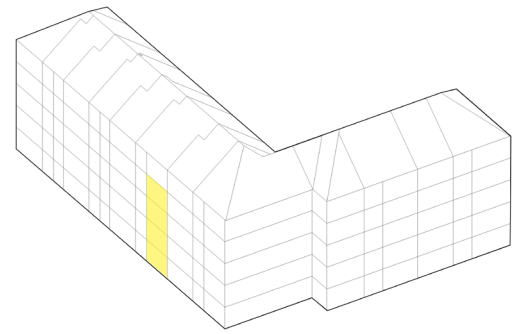
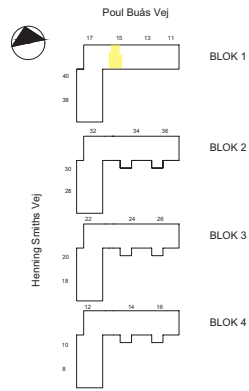
Lejlighed 3v.4

3 værelser
72 m²

Blok:
1

Ialt 4 stk.

Ingen elevator
Altan eller terrasse mod syd



Lejlighed 3vT.1

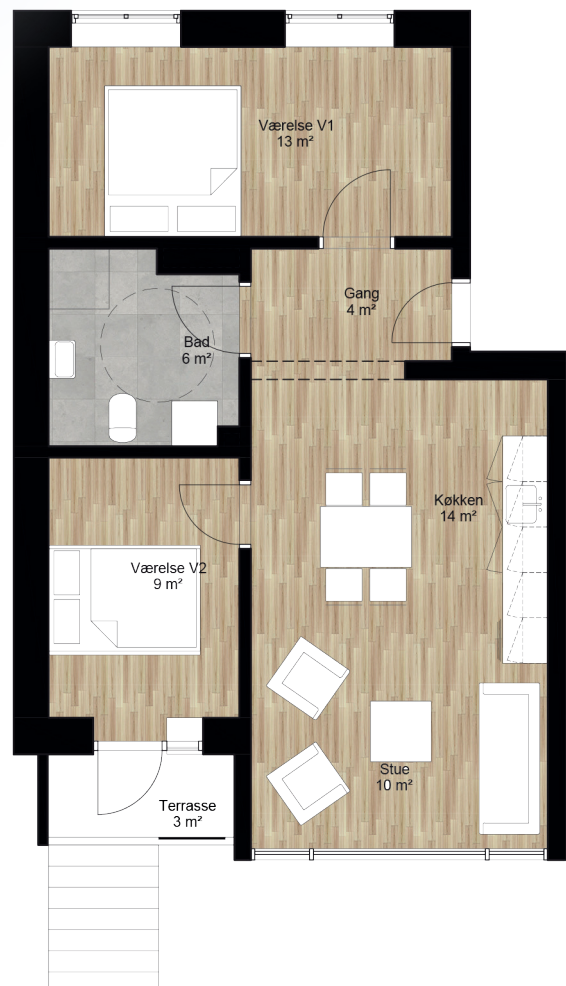
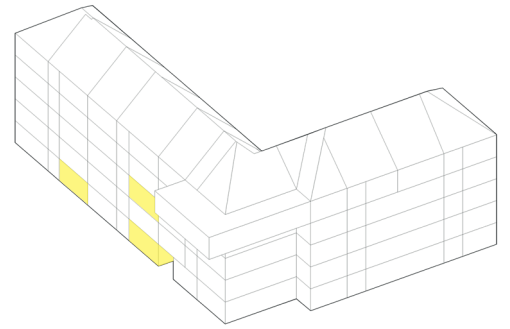
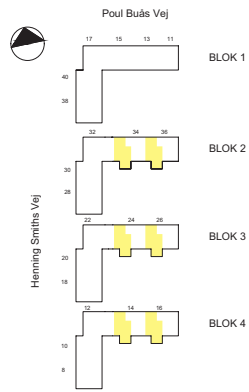
3 værelser
82 m²

Blok:
2, 3 og 4

Ialt 9 stk.

Elevator
Altan eller terrasse mod syd

Tilgængelighedsbolig



Lejlighed 3vT.2

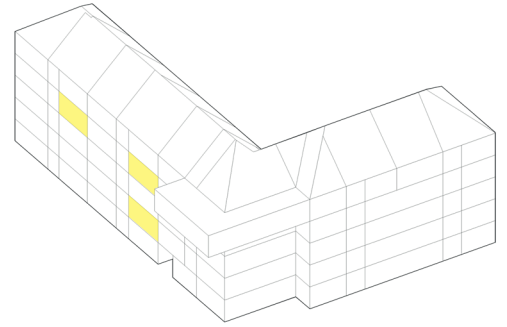
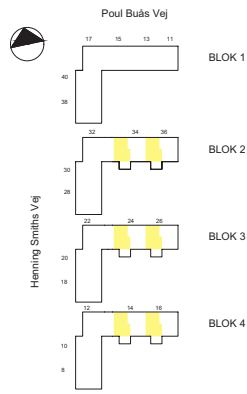
3 værelser
73 m²

Blok:
2, 3 og 4

Ialt 9 stk.

Elevator
Altan mod syd

Tilgængelighedsbolig



Lejlighed 3vT.3

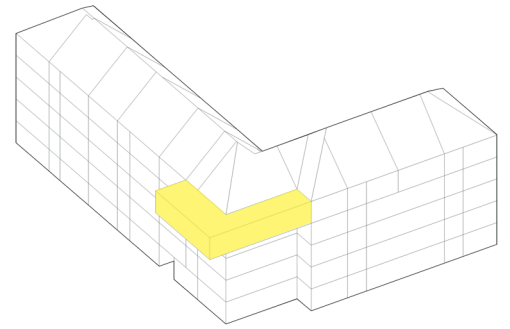
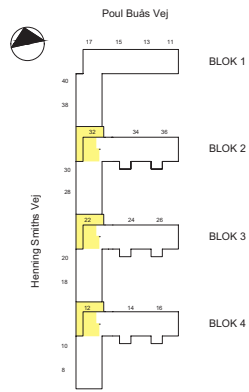
3 værelser
107 m²

Blok:
2, 3 og 4

Ialt 3 stk.

Elevator
Altan mod vest

Tilgængelighedsbolig



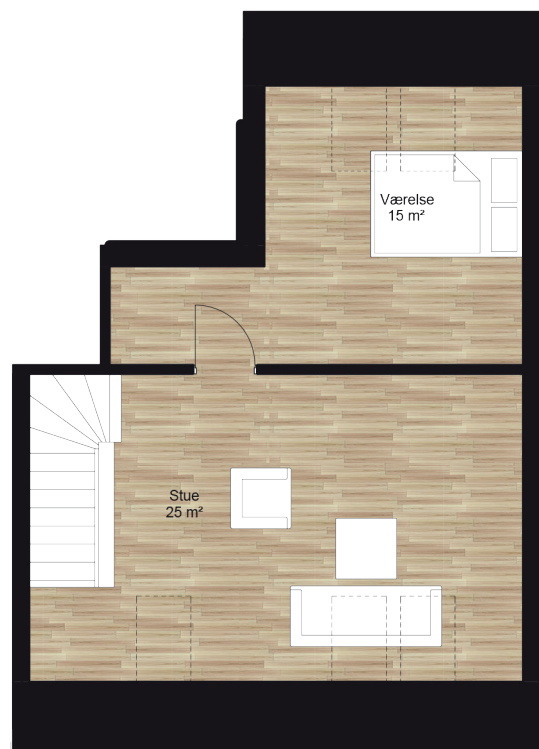
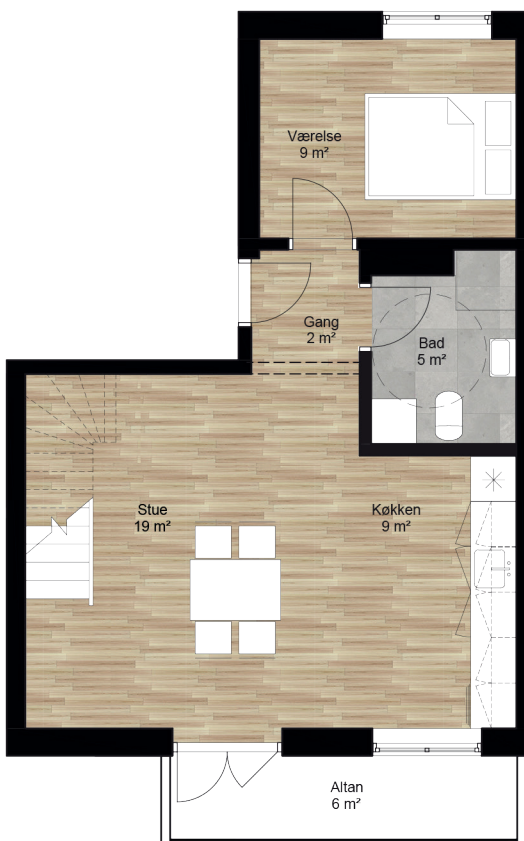
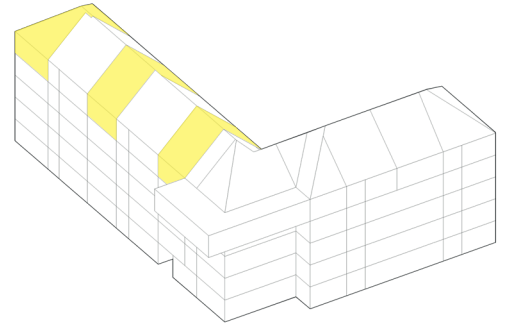
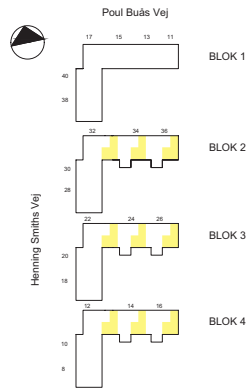
Lejlighed 3v2E.1

3 værelser
2 plan
110 m²

Blok:
2, 3 og 4

Ialt 9 stk.

Elevator
Altan mod syd



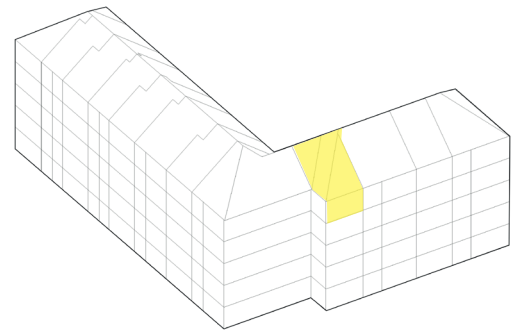
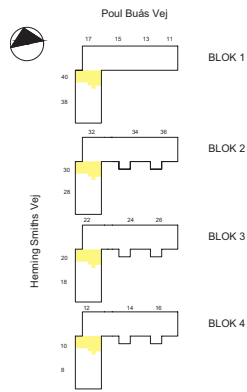
Lejlighed 3v2E.2

3 værelser
2 plan
93 m²

Blok:
1, 2, 3 og 4

Ialt 4 stk.

Minielevator
Altan mod vest



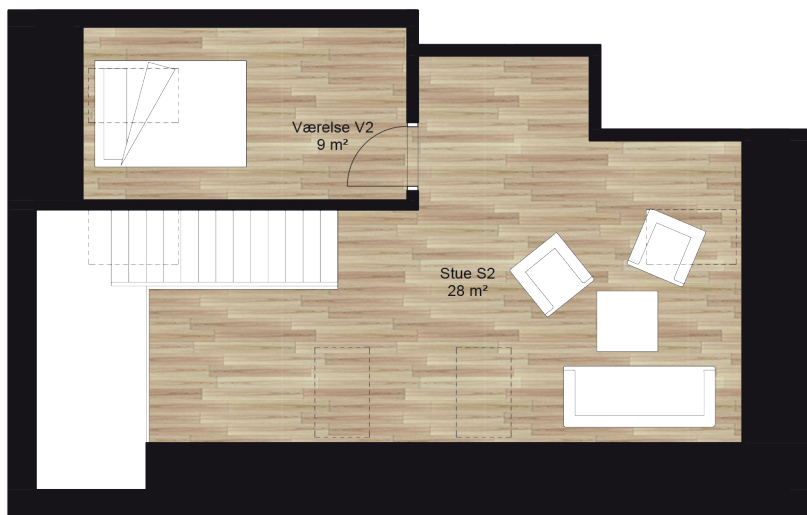
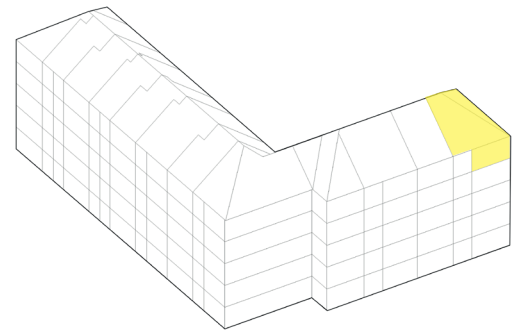
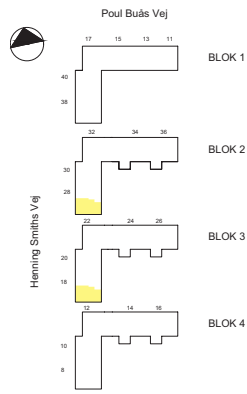
Lejlighed 3v2E.3

3 værelser
2 plan
96 m²

Blok:
2 og 3

Ialt 2 stk.

Minielevator
Altan mod vest



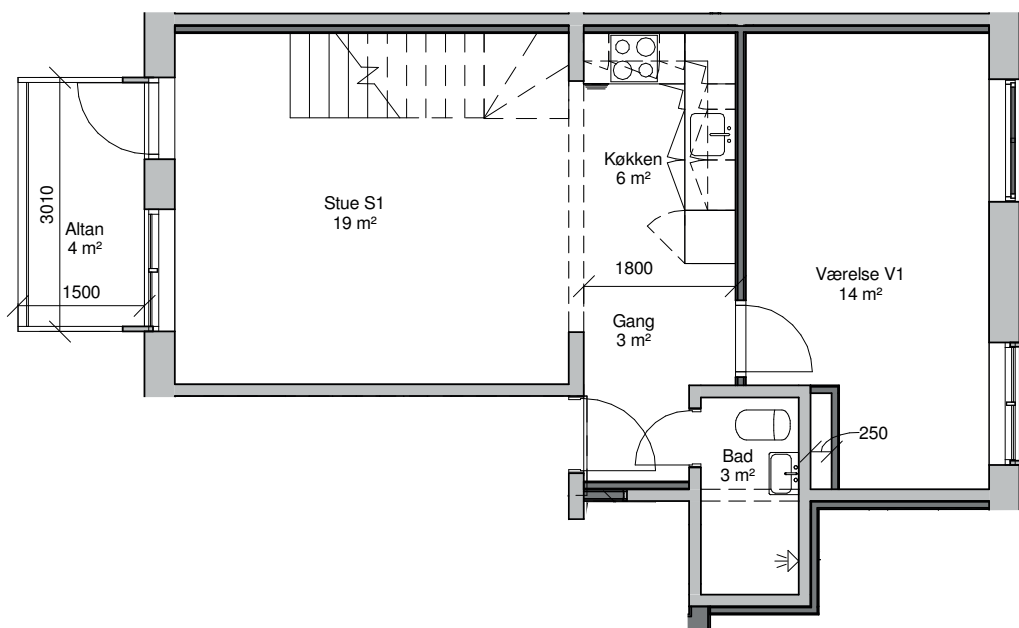
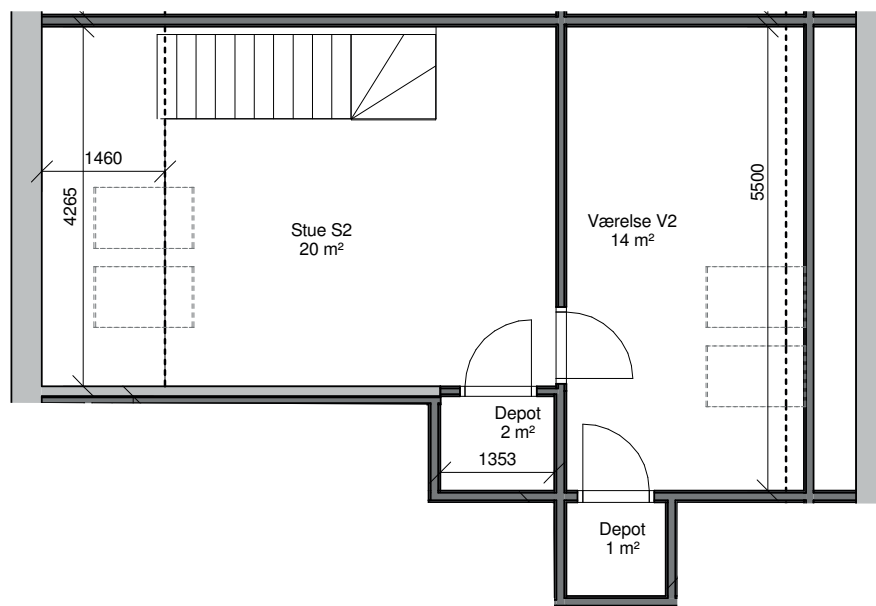
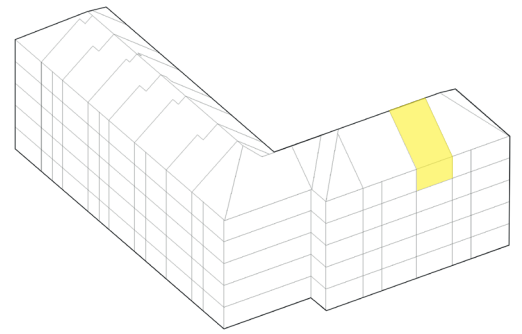
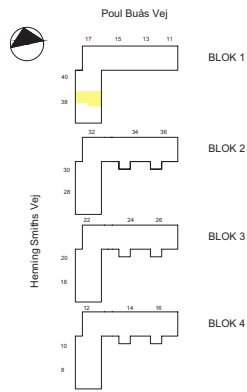
Lejlighed 3v2E.4

3 værelser
2 plan
103 m²

Blok:
1

Ialt 1 stk.

Minielevator
Altan mod vest



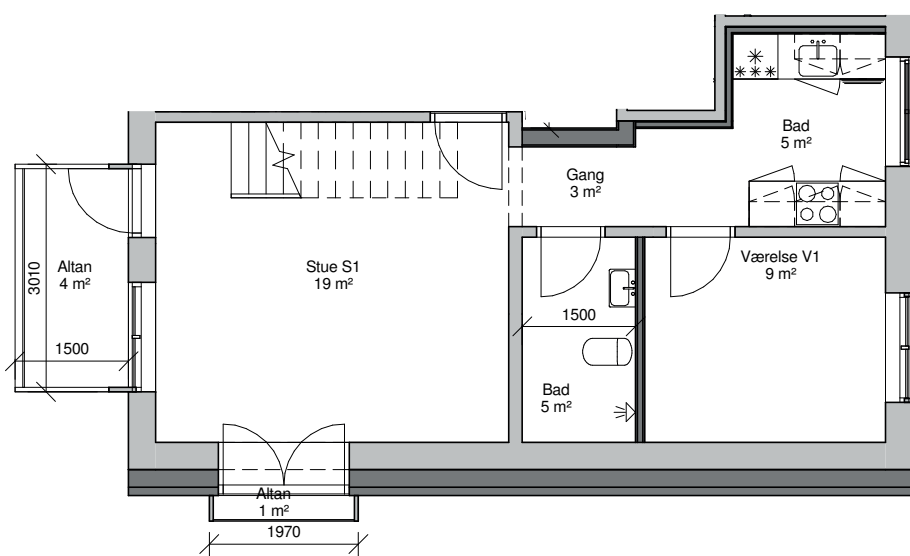
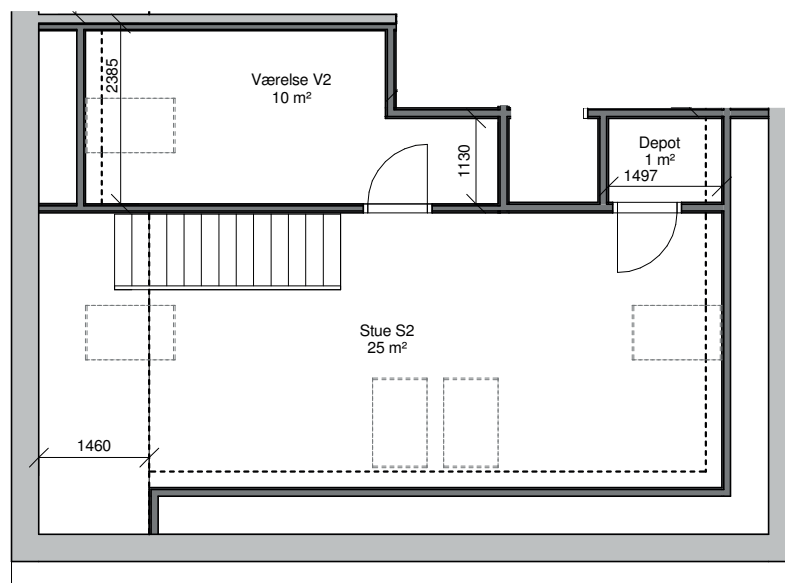
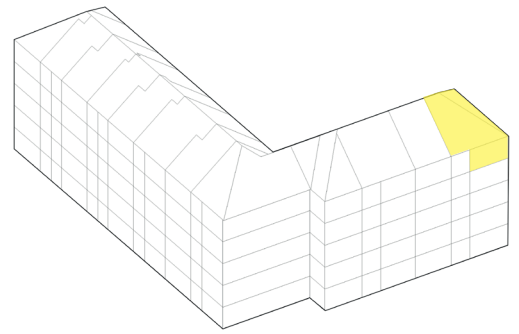
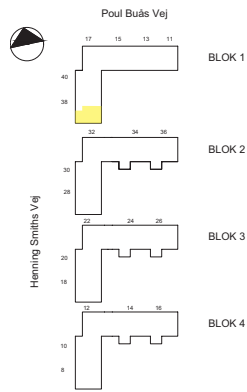
Lejlighed 3v2E.5

3 værelser
2 plan
97 m²

Blok:
1

Ialt 1 stk.

Minielevator
Altan mod vest



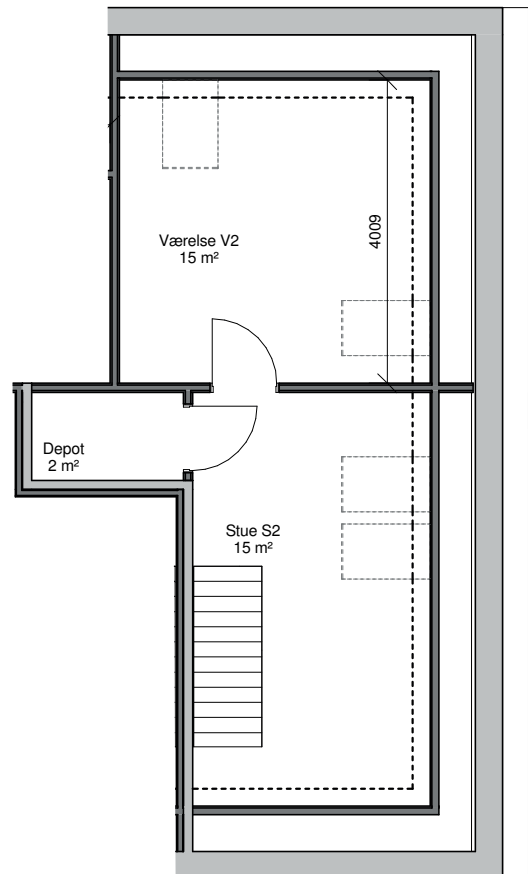
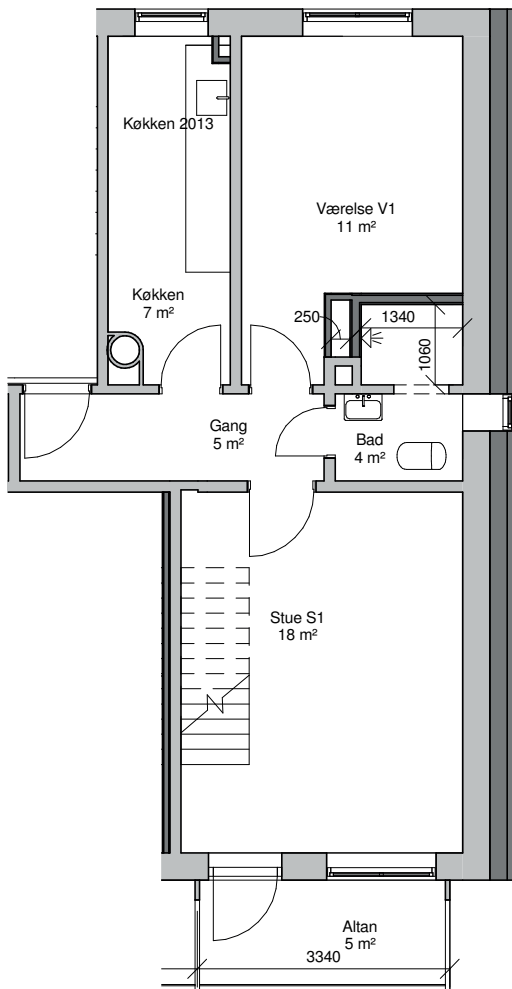
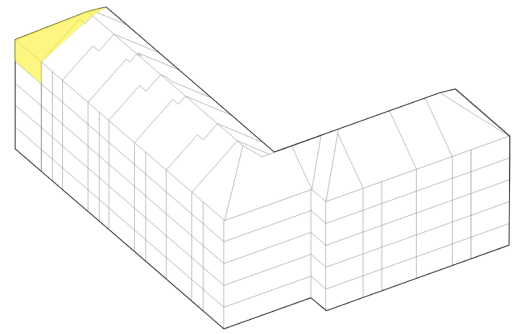
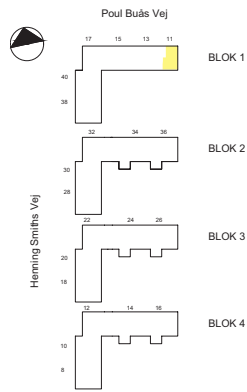
Lejlighed 3v2E.6

3 værelser
2 plan
94 m²

Blok:
1

Ialt 1 stk.

Ingen elevator
Altan mod syd



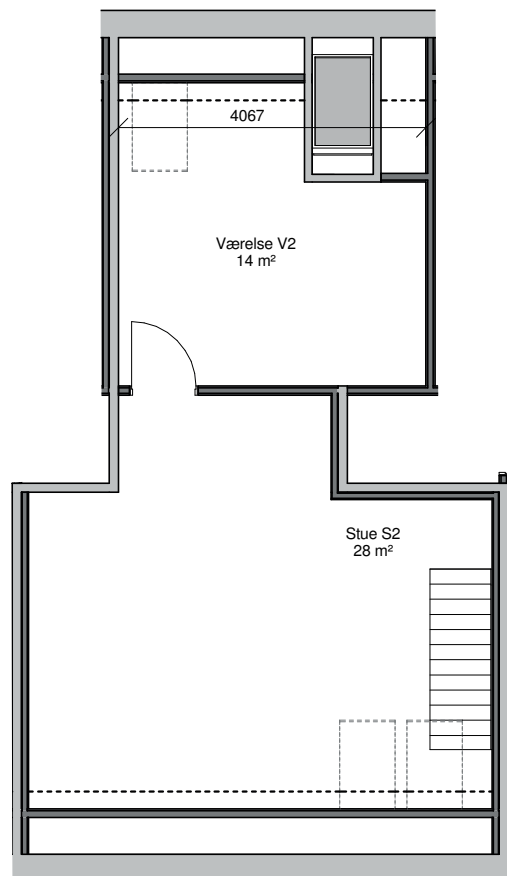
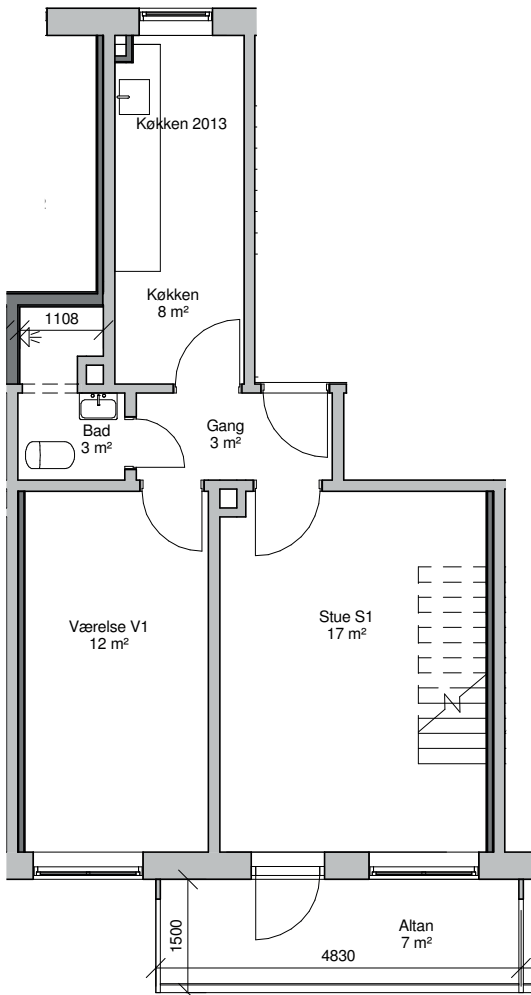
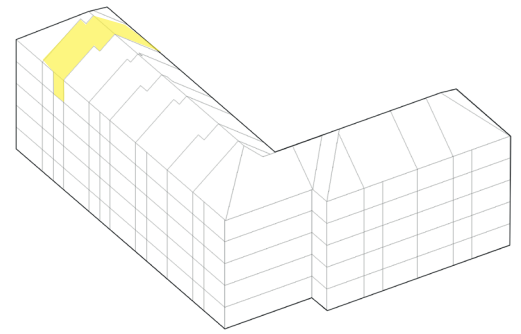
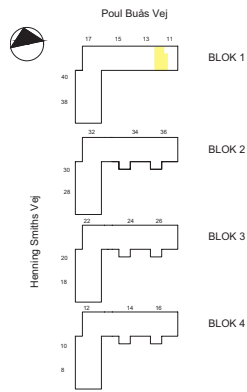
Lejlighed 3v2E.7

3 værelser
2 plan
103 m²

Blok:
1

Ialt 1 stk.

Ingen elevator
Altan mod syd



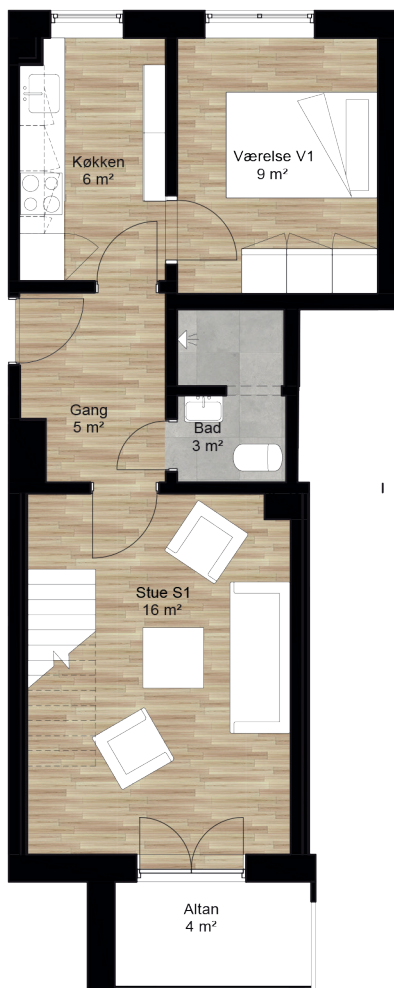
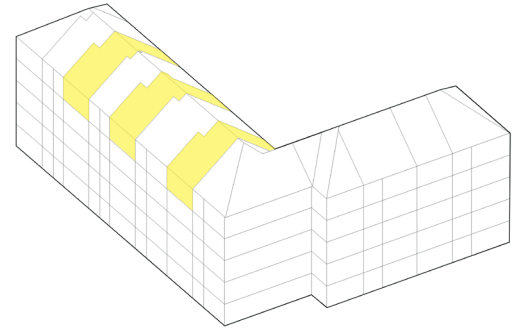
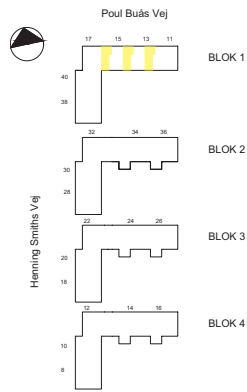
Lejlighed 3v2E.8

3 værelser
2 plan
98 m²

Blok:
1

Ialt 3 stk.

Ingen elevator
Altan mod syd



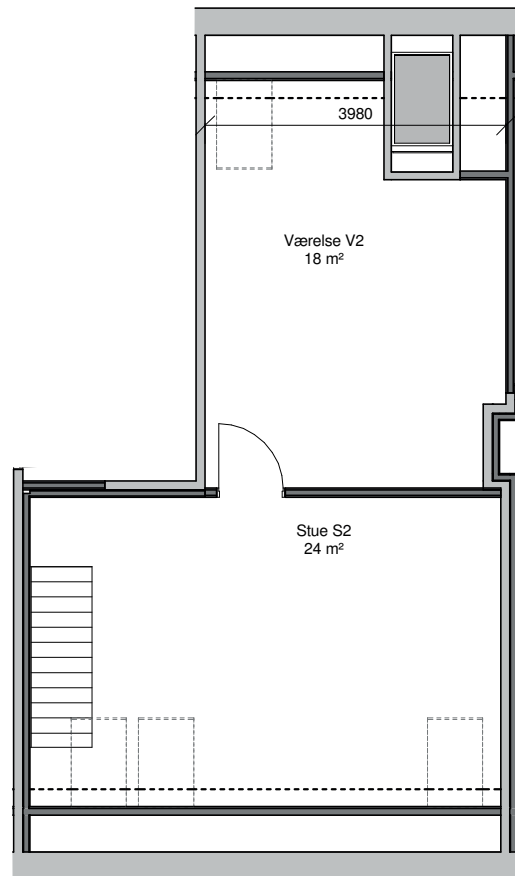
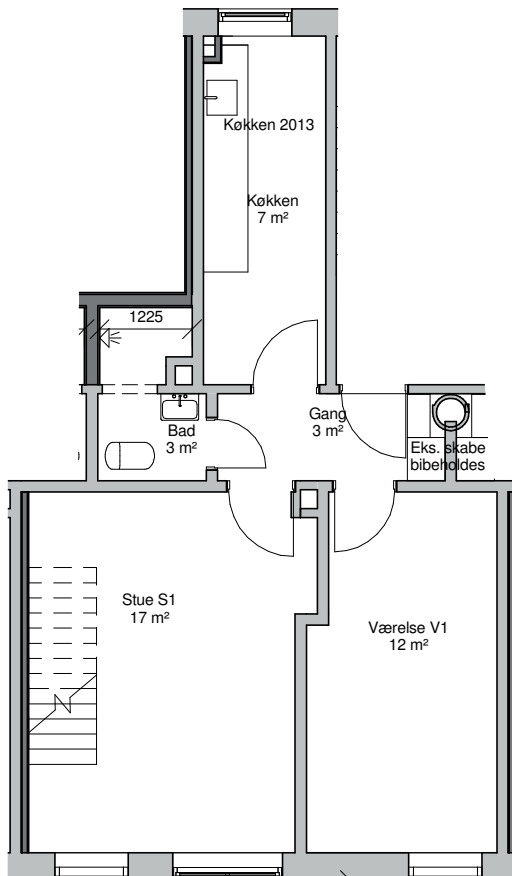
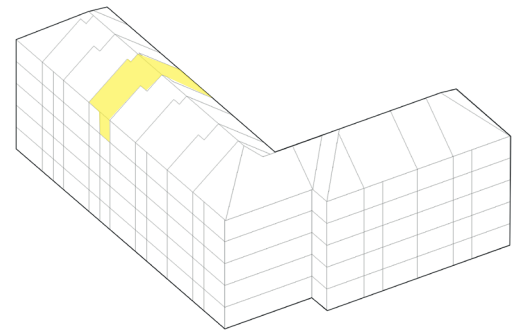
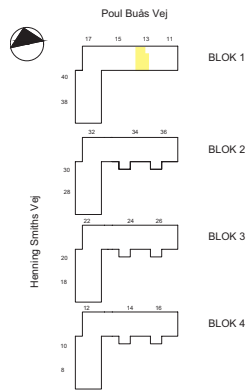
Lejlighed 3v2E.9

3 værelser
2 plan
104 m²

Blok:
1

Ialt 1 stk.

Ingen elevator
Altan mod syd



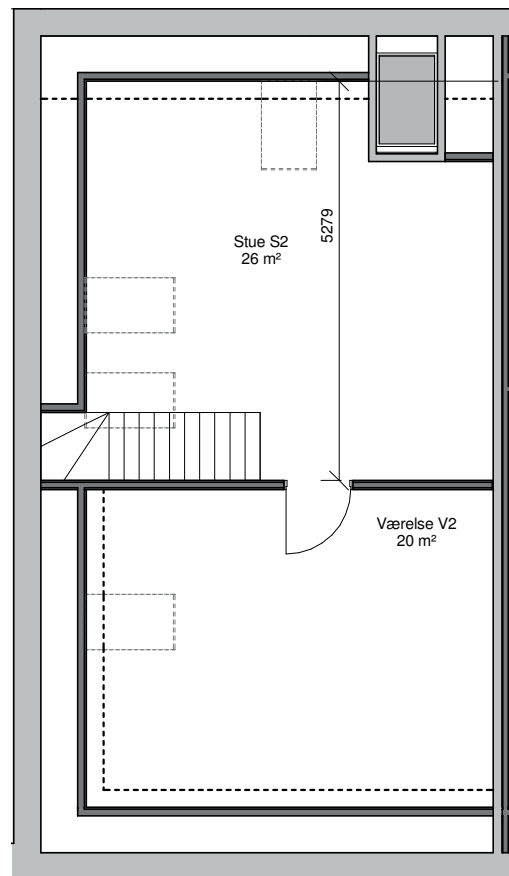
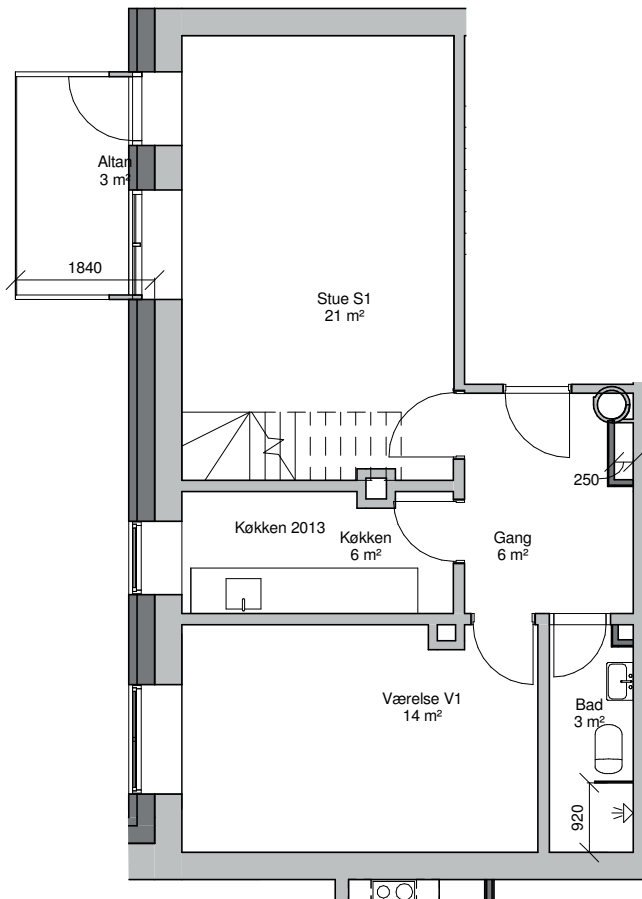
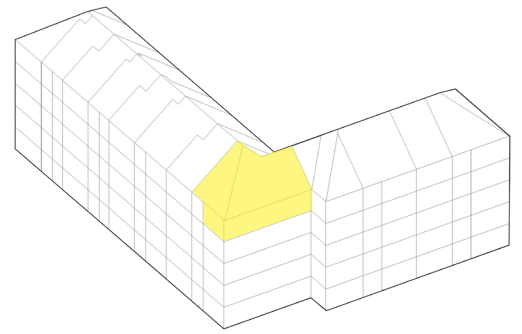
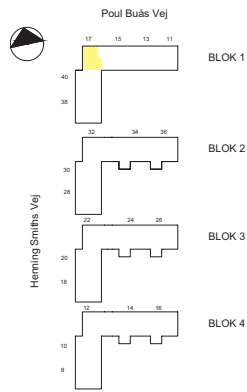
Lejlighed 3v2E.10

3 værelser
2 plan
113 m²

Blok:
1

Ialt 1 stk.

Ingen elevator
Altan mod vest



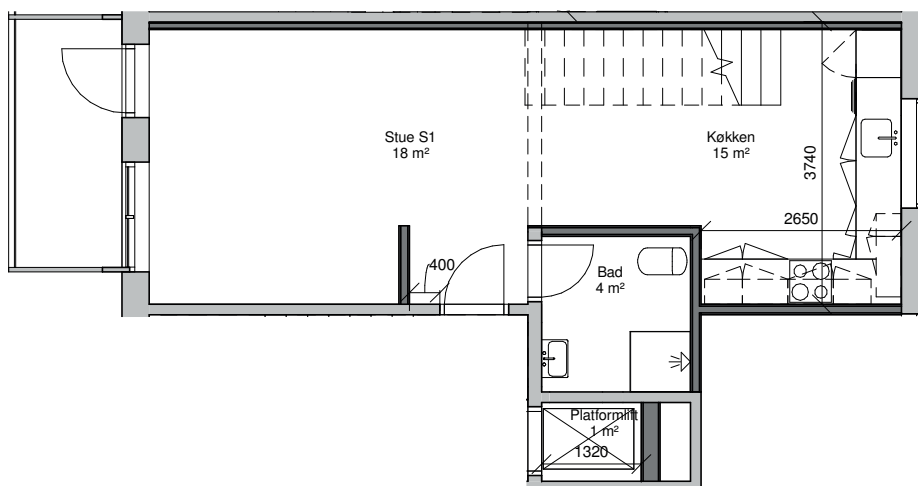
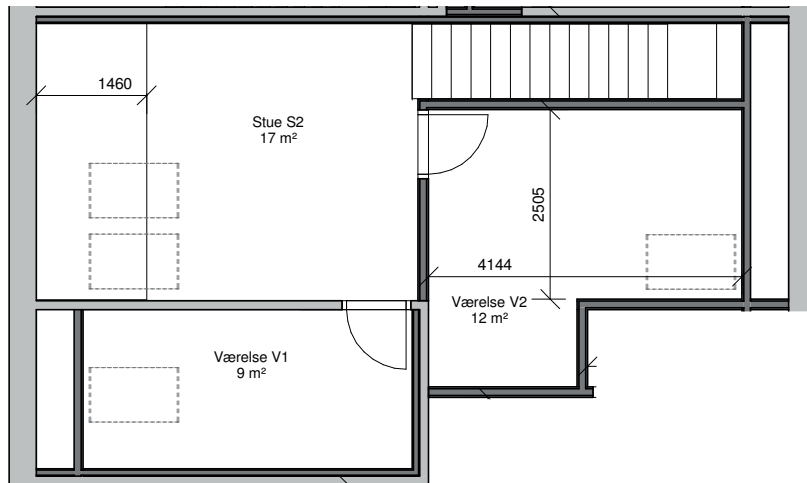
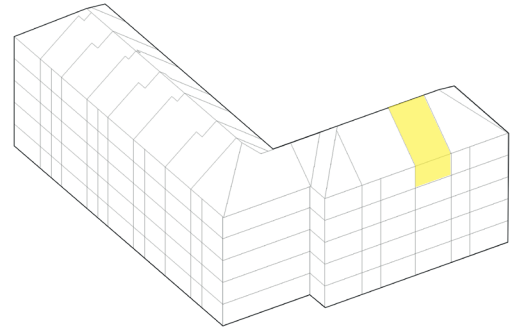
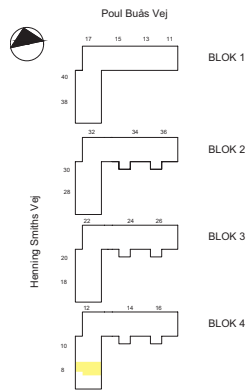
Lejlighed 3v2E.11

3 værelser
2 plan
96 m²

Blok:
4

Ialt 1 stk.

Minielevator
Altan mod vest



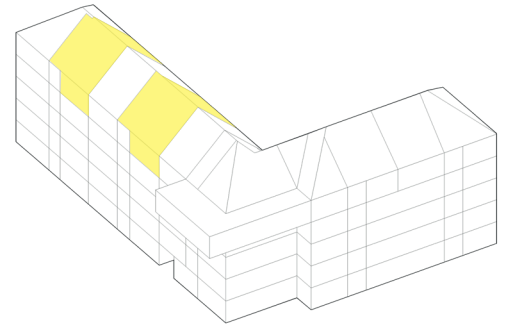
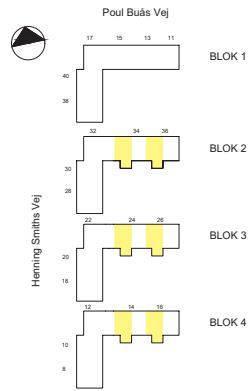
Lejlighed 4v2E.1

4 værelser
2 plan
134 m²

Blok:
2, 3 og 4

Ialt 6 stk.

Elevator
Altan mod syd



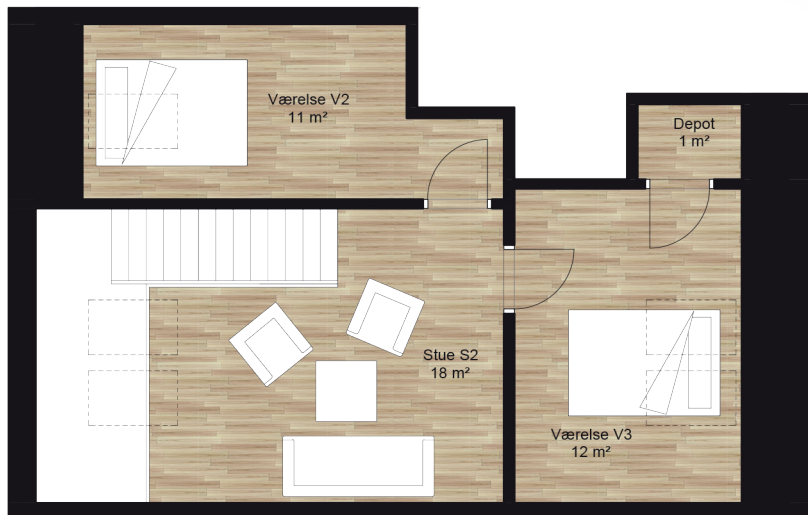
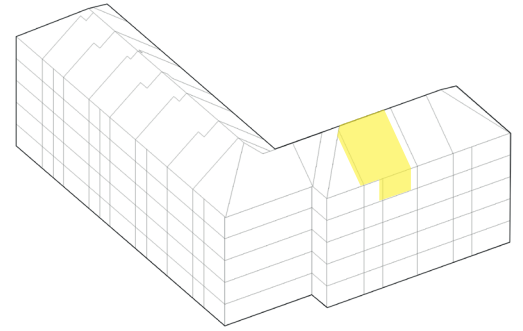
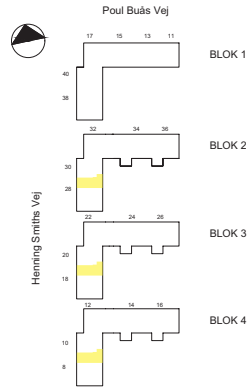
Lejlighed 4v2E.2

4 værelser
2 plan
101 m²

Blok:
2, 3 og 4

Ialt 3 stk.

Minielevator
Altan mod vest



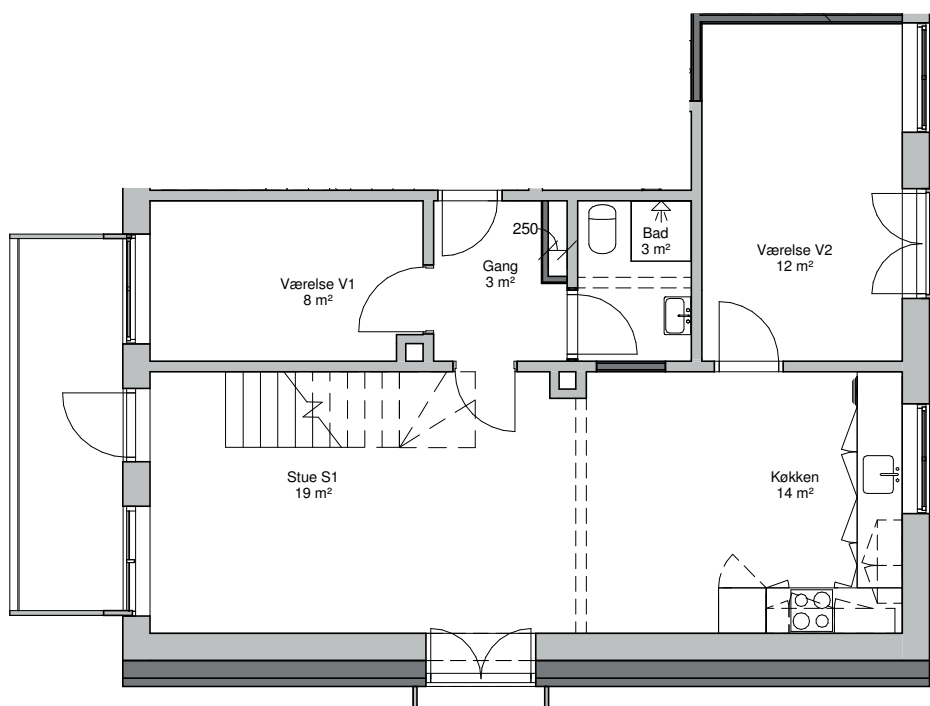
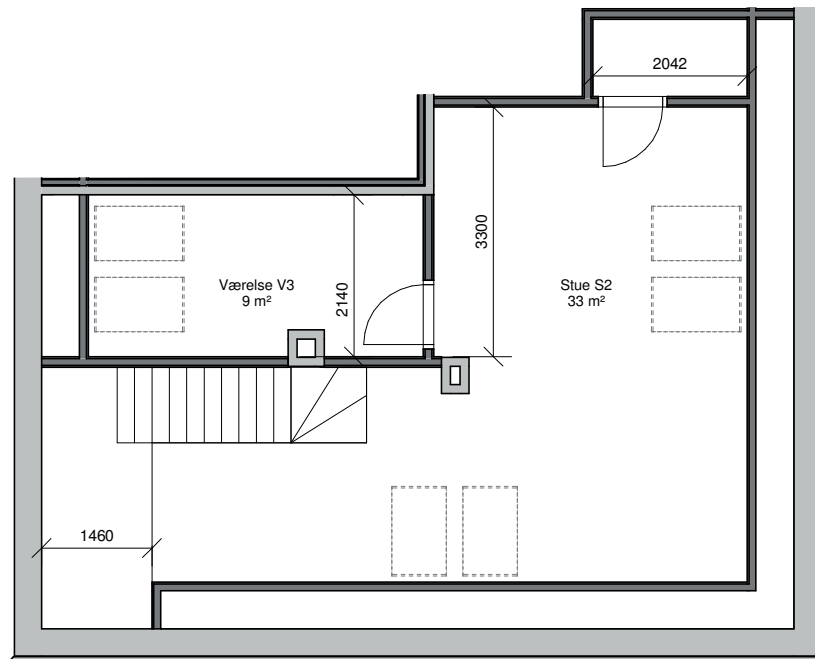
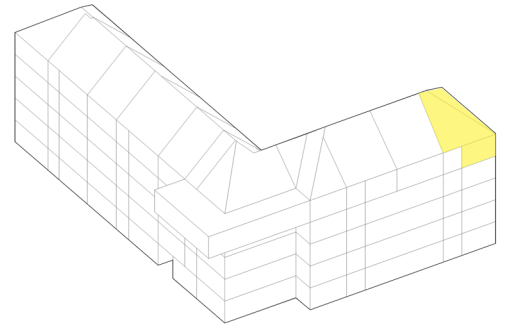
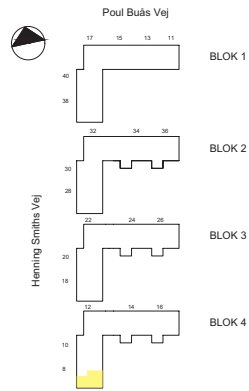
Lejlighed 4v2E.3

4 værelser
2 plan
126 m²

Blok:
4

Ialt 1 stk.

Minielevator
Altan mod vest



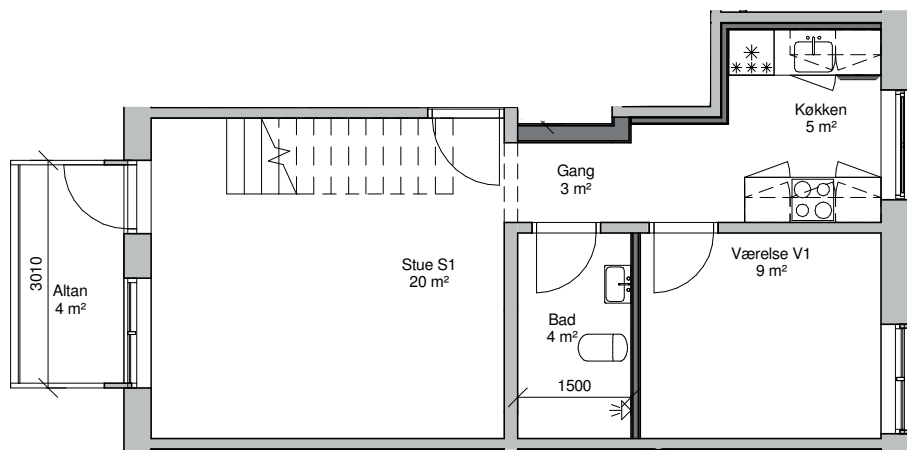
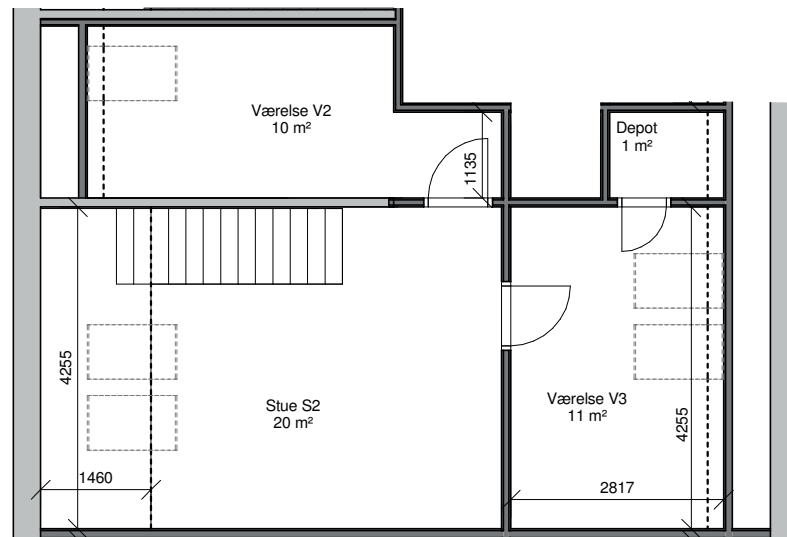
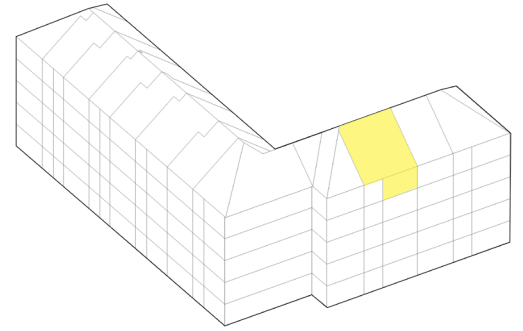
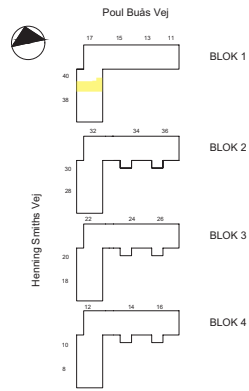
Lejlighed 4v2E.4

4 værelser
2 plan
103 m²

Blok:
1

Ialt 1 stk.

Minielevator
Altan mod vest



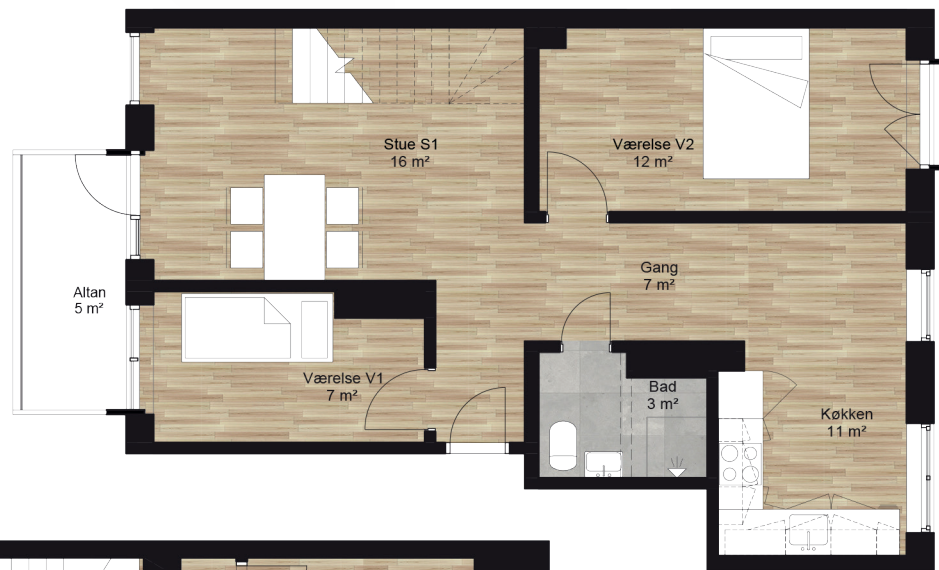
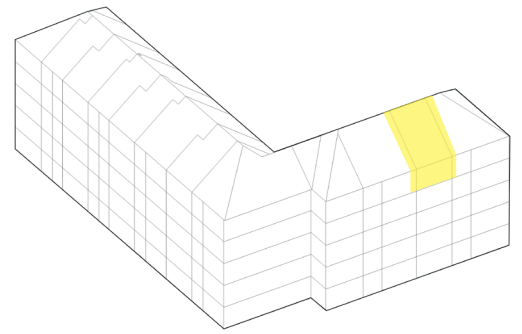
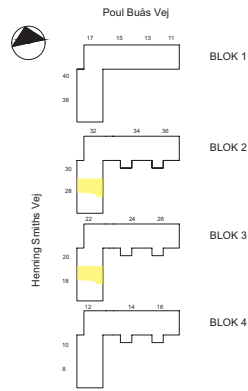
Lejlighed 5v2E.1

5 værelser
2 plan
126 m²

Blok:
2 og 3

Ialt 2 stk.

Minielevator
Altan mod vest



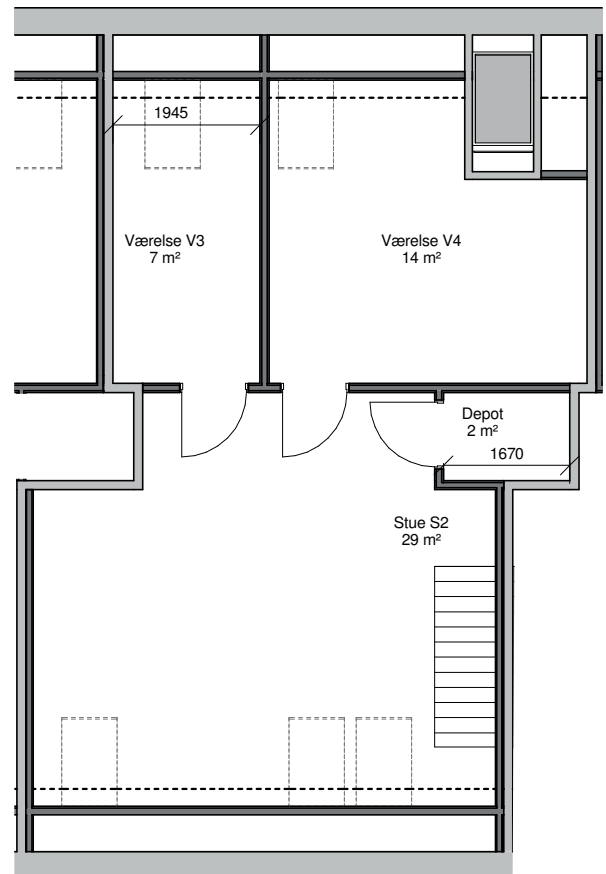
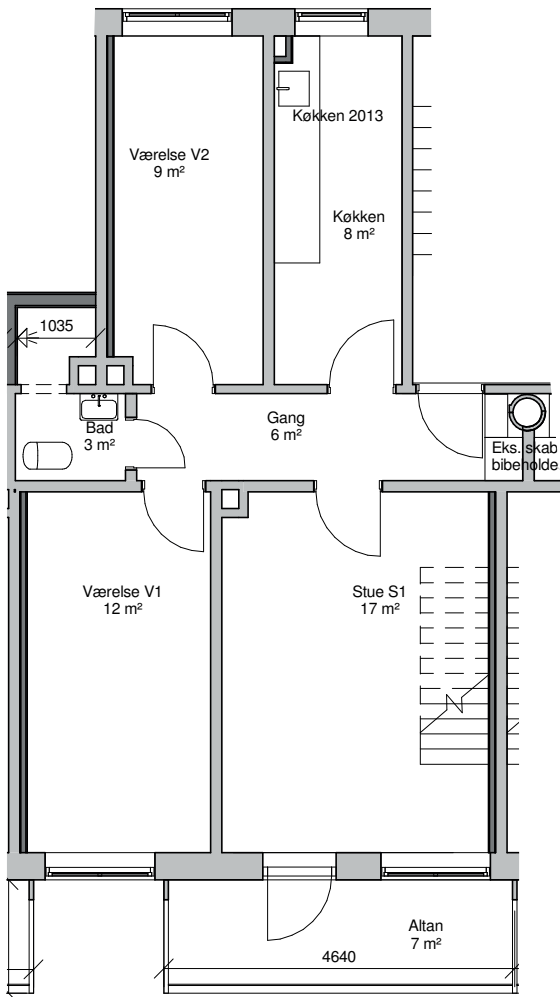
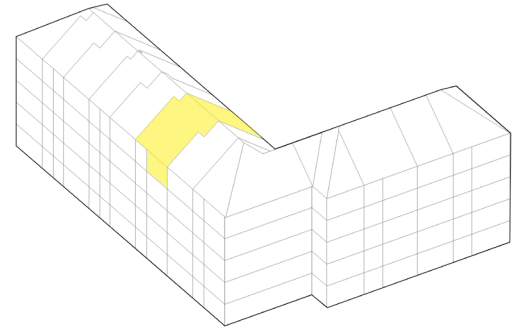
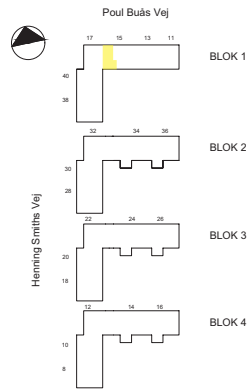
Lejlighed 5v2E.2

5 værelser
2 plan
126 m²

Blok:
1

Ialt 1 stk.

Ingen elevator
Altan mod syd





HIMMERLAND
BOLIGFORENING

Rendsburggade 22, 9000 Aalborg | Tlf. 96 31 52 00, info@abhim.dk | www.abhim.dk